

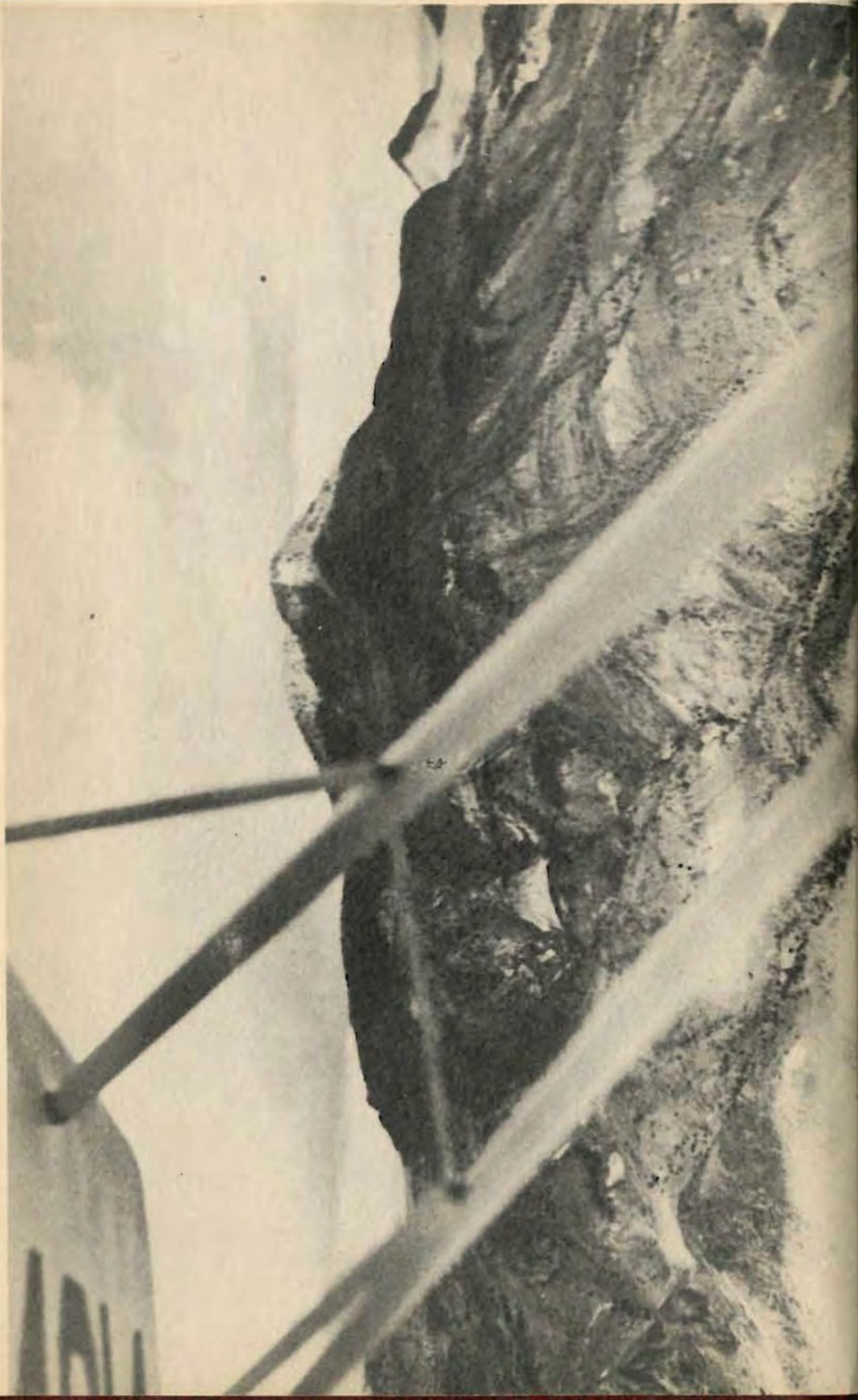


JACK REINHART
Editor-in-Chief

THOMAS OLSON
Business Manager



PUBLISHED BY THE STUDENTS
OF THE
NEW MEXICO SCHOOL OF MINES
OF
SOCORRO, NEW MEXICO



"Forsan et haec meminisse iuvabit"
—Virgil

*"And perhaps it will be pleasant
to remember"*

1941



1945

HONORING THE MEN OF
NEW MEXICO SCHOOL OF MINES
WHO GAVE THEIR LIVES IN WORLD WAR II

DEDICATED BY CLASS OF 1947

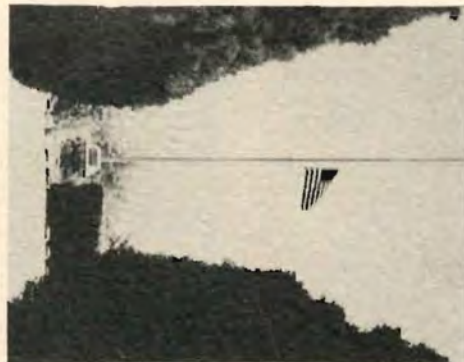
W. CAYLE L. ANDERSON
WILLIAM E. BUCEY
EDWARD R. BUDE
FRANCIS J. CUMMINS
DONALD E. FLEISHER
JACK E. FIFE

PHILLIP C. HELMS
CALVIN L. LYON
RODNEY E. NAGLE
FRANCIS J. O'BOYLE
RONALD E. ODQUIST
LEONARD H. RACKMILL

MARK T. RUSSEL
THOMAS SKELTON
JAMES E. STAUDER
JOHN I. VIGIL
EDWARD E. ZIMMERLY

"—from these honored
dead we take increased
devotion to that cause
for which they gave the
last full measure of
devotion."

—A. LINCOLN



Dedication

IN RECOGNITION OF THEIR INITIATIVE, THEIR EFFORTS AND THEIR ABILITY, THIS BOOK IS RESPECTFULLY DEDICATED TO THE MEMBERS OF THE STAFF OF THE 1925 PORPHYRY, THE FIRST ANNUAL OF THE NEW MEXICO SCHOOL OF MINES.

9040

77EN

STAFF OF THE 1925 PORPHYRY

GERALD J. BALLMER Editor-in-Chief
PAUL L. ROUNDS Associate Editor
STANLEY A. MAYER Business Manager
ARLO C. HATFIELD Advertising Manager
JACK E. FYFE Circulation Manager
WILLIAM W. STALEY Organization Manager
CHARLES F. PARK Athletics Manager
C. W. ORR Art Editor
ALFRED T. LOVELACE Photograph Editor
HILMAR D. LOOK Humor Editor

70W

Mr. Ballmer is Superintendent of Mines at the Chino Mines, Kennecott Copper Corporation. Mr. Hatfield is Superintendent of the Gulf Oil Company at Borger, Texas. Mr. Staley is Professor of Mining at the University of Idaho School of Mines and is the author of several excellent textbooks on Mine Surveying and Mine Plant Design. Mr. Park is Professor of Geology at Stanford University, California. Mr. Rounds and Mr. Fyfe are deceased. No recent information was obtainable concerning other members of the staff, but Mr. Mayer is known to be in South America, Mr. Orr is believed to be at Morenci, Arizona, and Mr. Lovelace is in Rochester, New York.

Two of the members of this first staff responded to a request for advice from their twenty-three year fund of experience. Mr. Hatfield writes us:

"The young engineer should not assume that the key to advancement is technical knowledge alone. He should develop his ability to get along with people and to express his ideas effectively to one or more persons. With adequate technical training his rise to a position of responsibility will be in direct proportion to the skill he attains in these arts." Mr. Staley, who should know, finds giving advice to the younger generation a thankless task, but bids the fellows to "take the tequilla easy."

The advice is excellent and is from men well qualified to give it. In fact we could learn many lessons from the example of that "swell bunch of guys," who didn't even get started on that first annual until mid-February, but collaborated so efficiently that a fine book was distributed before Commencement.

Our Thanks

to Mrs. Ruby Griffith and Miss Betty Gianera for their cheerful and prompt assistance on numerous critical occasions; to Dr. William G. Camp for perfect cooperation and unfailing encouragement; to Professor C. C. Crawford for valuable advice, ideas and suggestions; to Mr. Hugh Thompson, Editor of the Socorro Chieftain, for his willingness to supply printing information; and to Don Golding, Bob Marcus, Ned Stewart, and Dick Chenot for valuable assistance.

Parts

FACULTY & ADMINISTRATION

CLASSES

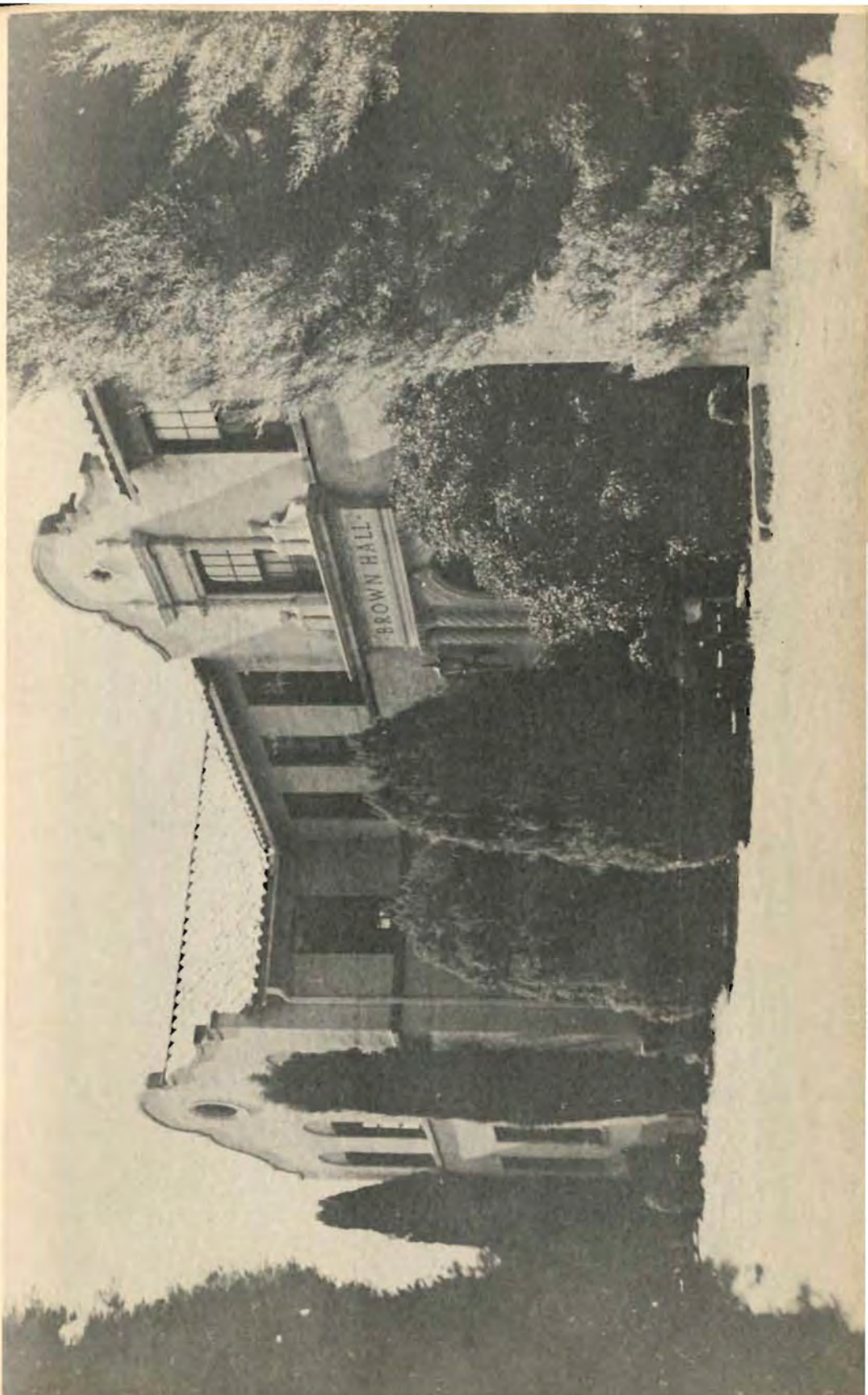
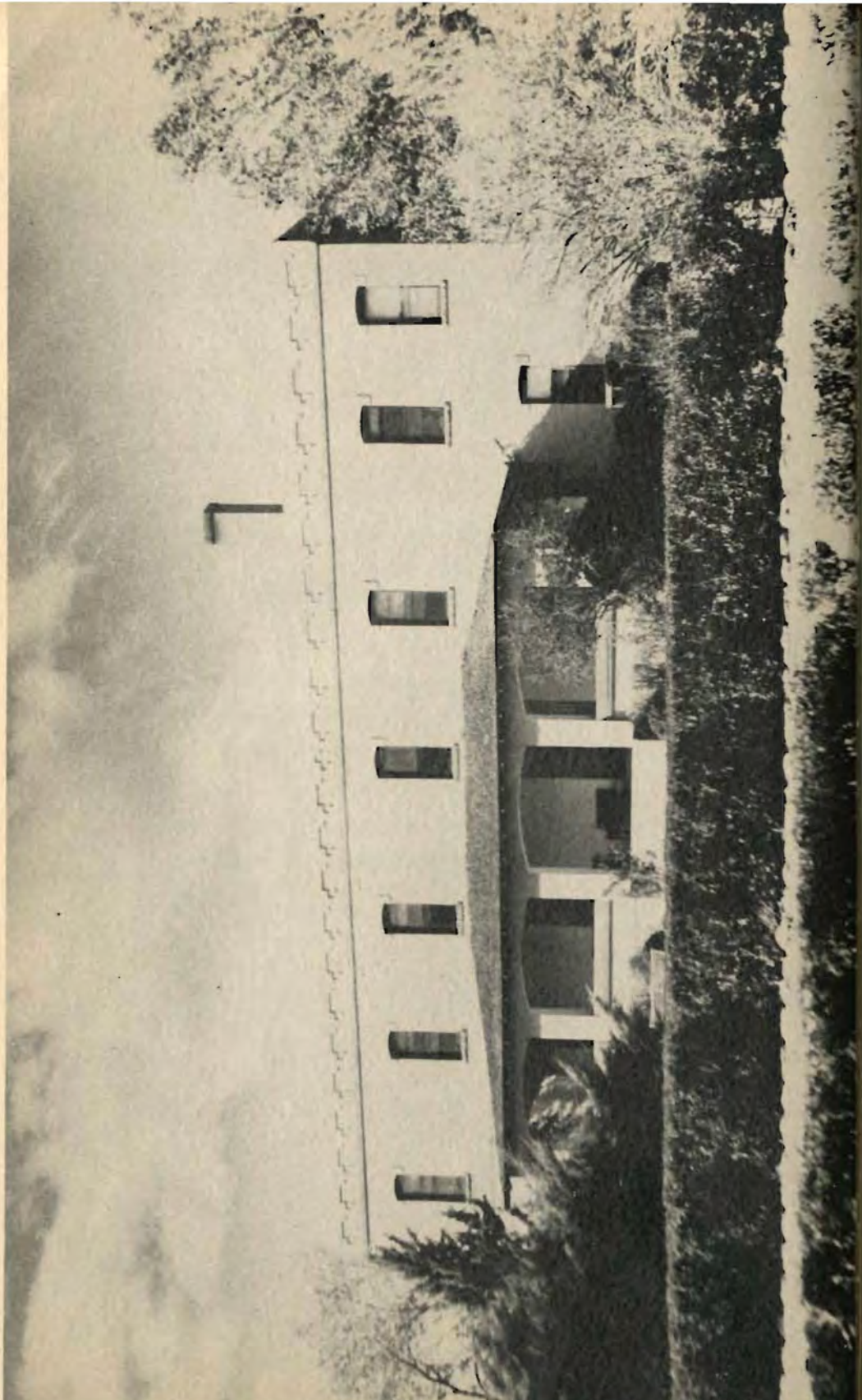
ORGANIZATIONS

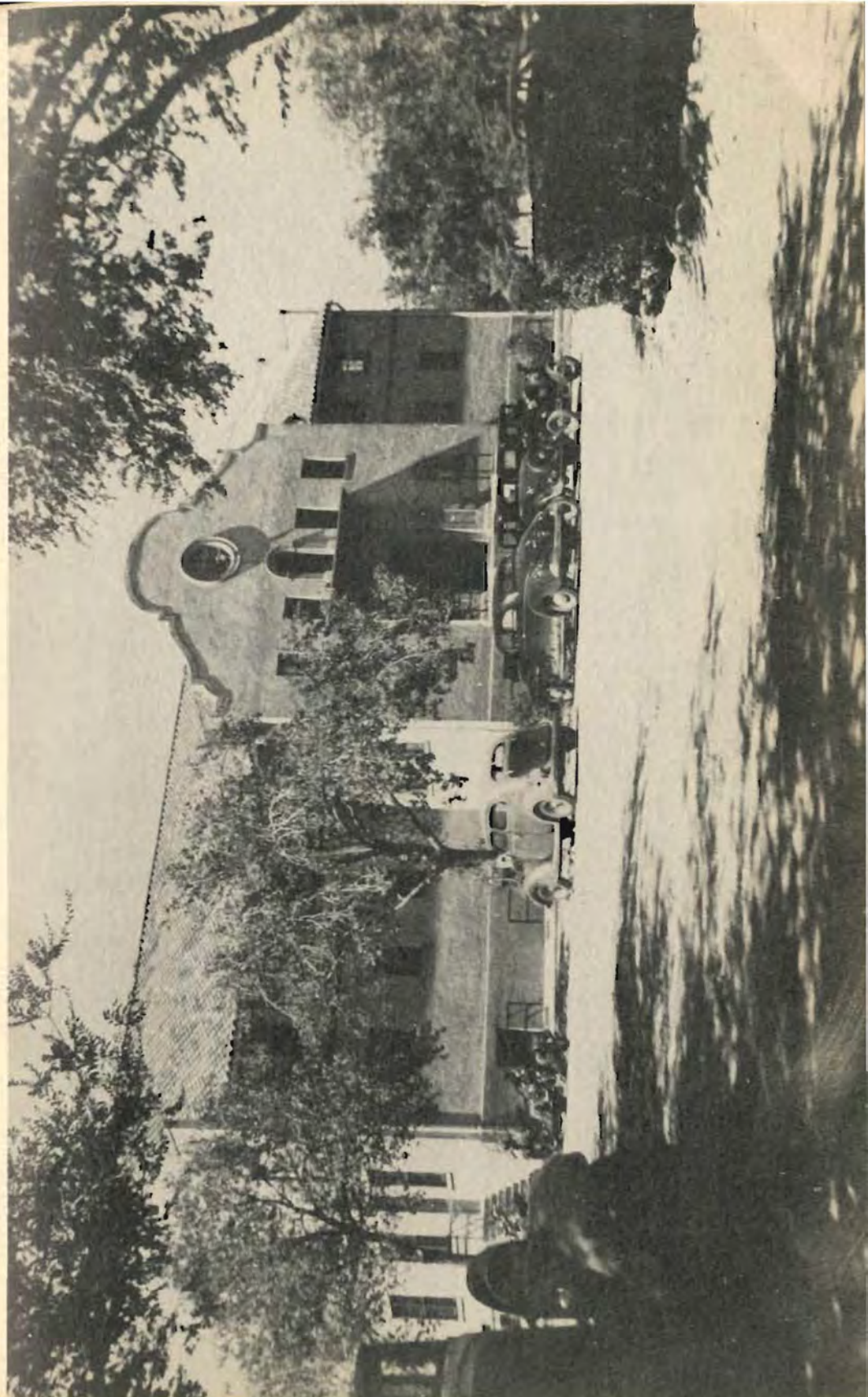
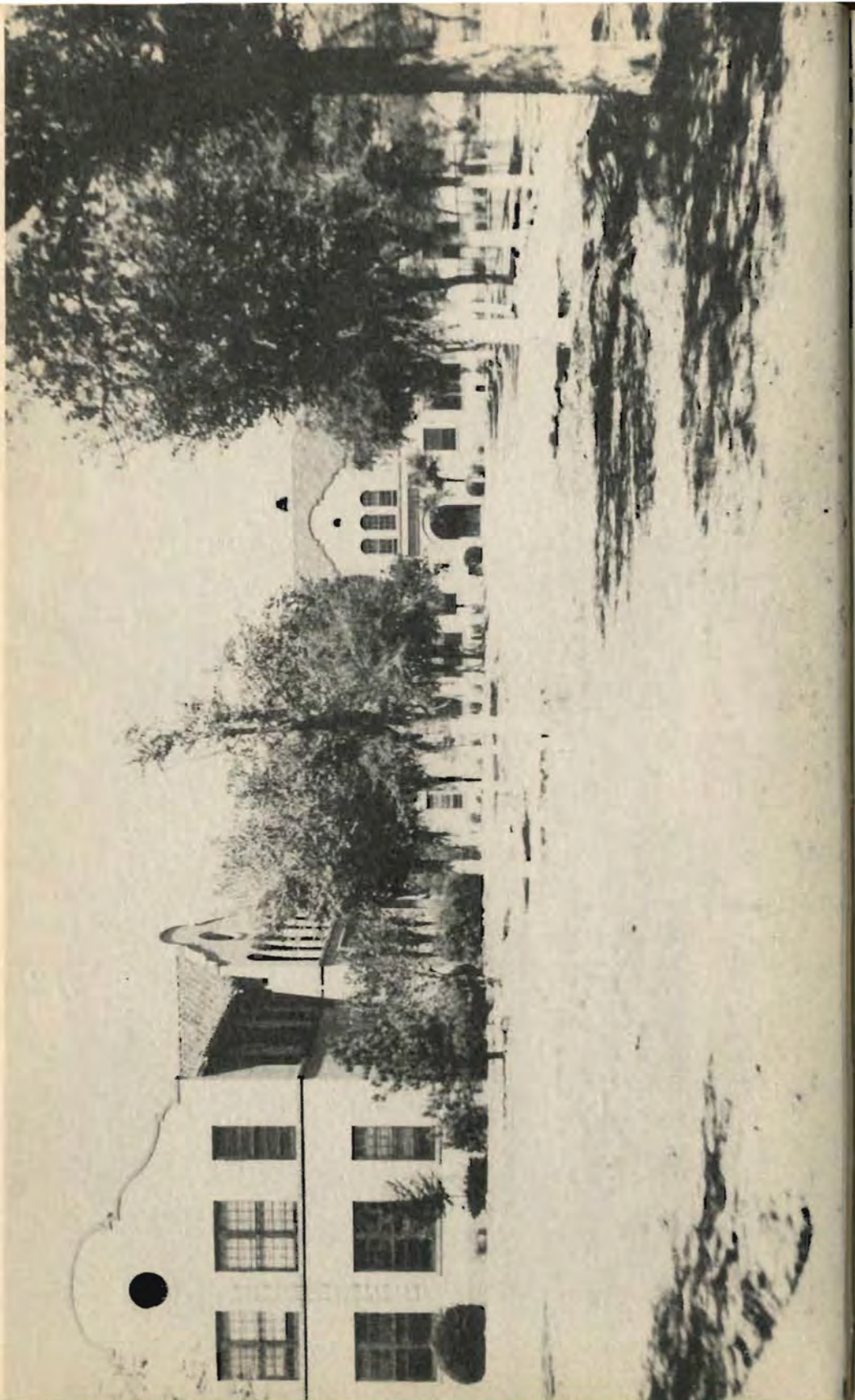
PUBLICATIONS

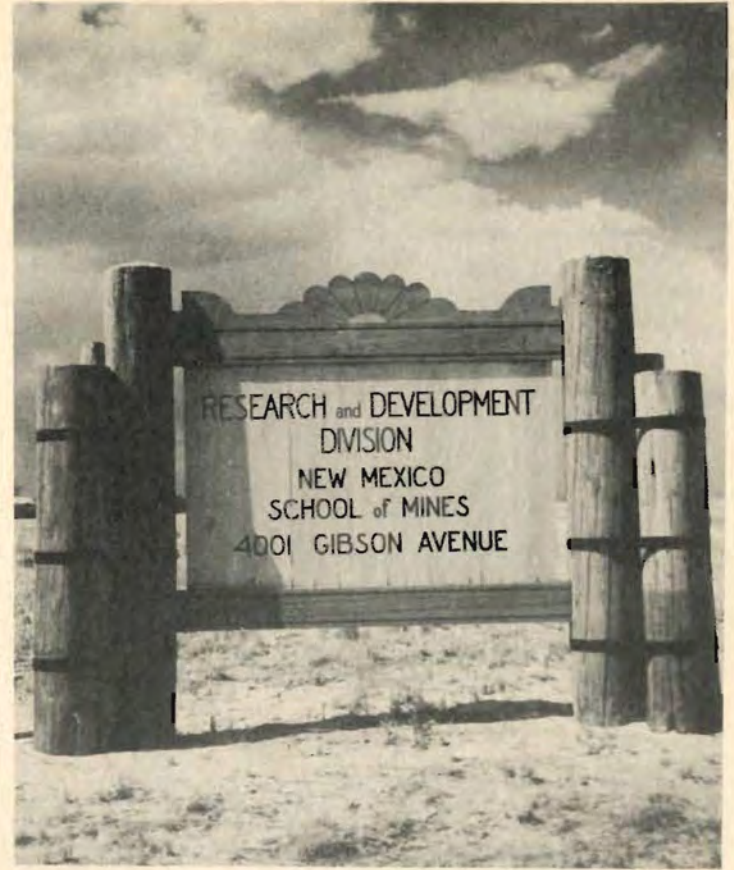
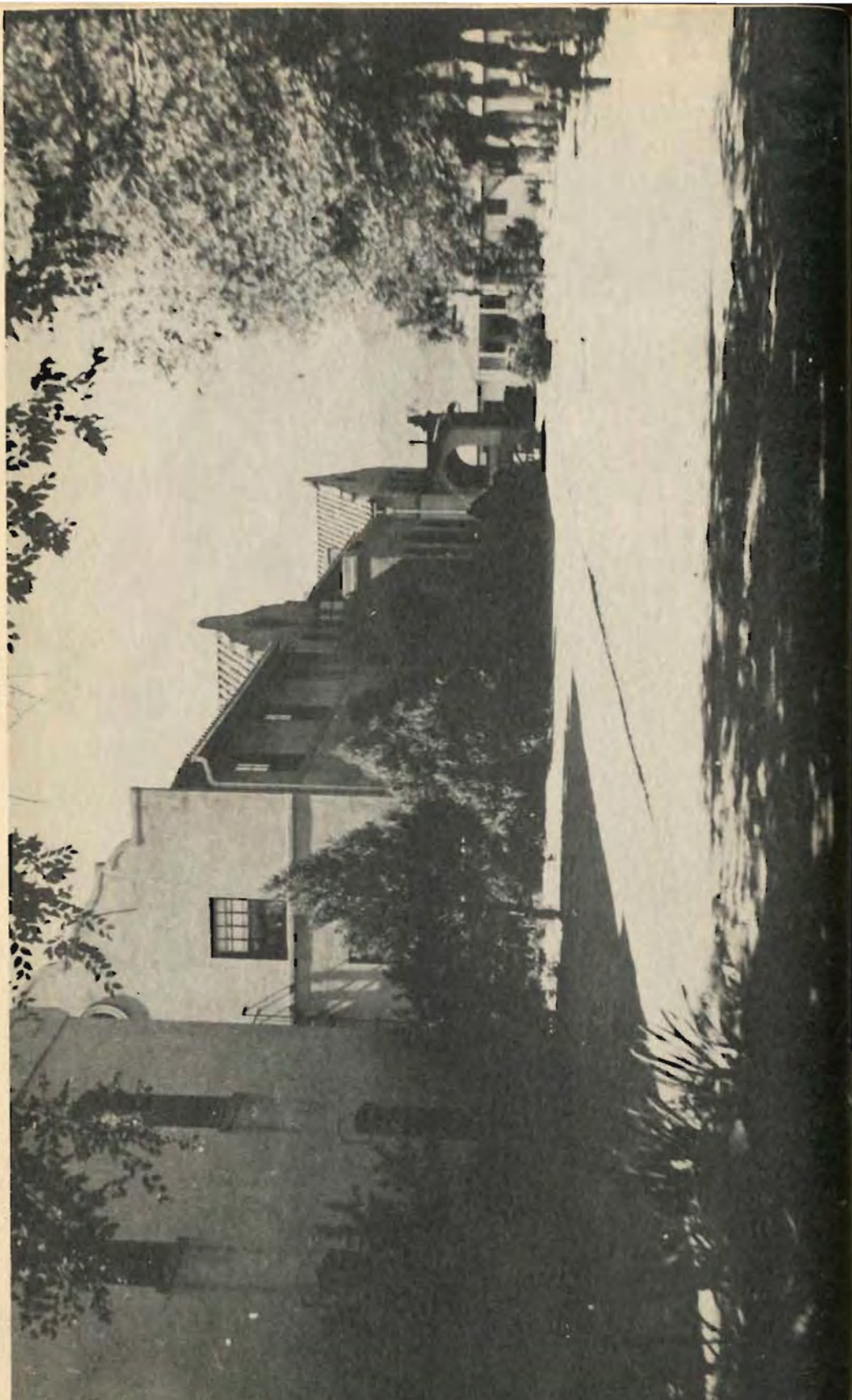
EVENTS

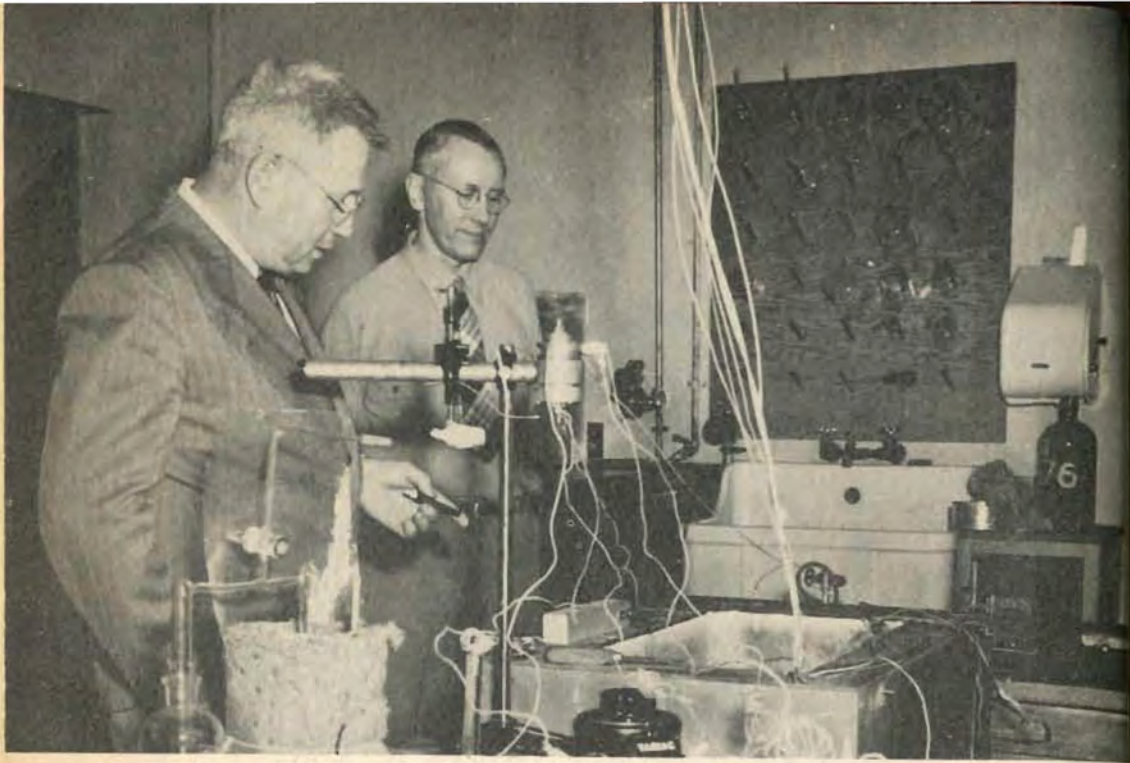
ATHLETICS

ALUMNI ASSOCIATION









**FACULTY &
ADMINISTRATION**



"BURRHEAD"

The Wheels

"FEASIBLE"



"CREEPY"



"DISMAL"



"HAPPY"



"SILENT JOE"

The Mob



"7 CROWN"



"PANCHO"



"BARNYARD"



"MR. ECHO"



"COTTONWOOD"



"MUMBLES"



"KILLER"

"PREACHER"

"GORGEOUS"

"LEFTY"

"MUSCLES"

"LIPPY"

"JEFE"

"WILD BILL"

"CHIEF"





E. J. WORKMAN,
B. S., Ph. D.

The President

I join with the editors of THE PORPHYRY and all other students in bespeaking a progressively influential future for the School of Mines and increasingly successful careers for its graduates.

E. J. Workman
President

Director of Faculty



WILLIAM G. CAMP
B. A., Ph. D.

The thoughtful efforts to achieve a happy combination of esthetic and practical values in the 1948 PORPHYRY symbolize the attitude of the student and are prophetic of his future.

William G. Camp
Director of Instruction



Chemistry

M. F. STUBBS,
A. B., M. S., Ph. D.



IRL T. SCOTT
B. S., M. A., Ph. D.



THEODORE C. CRAWFORD
A.B., A.M.



Chemistry Department



Engineering

ALBERT A. KOCH
C. E., B. S., M. S.



Engineering Department



Geology

GEORGES VORBE
B. A.



CLAY T. SMITH
B. S., M. S., Ph. D.



GEORGE VORBE
CLAY T. SMITH

Humanities



CECIL C. CRAWFORD
A. B., A. M.



BENJAMIN KELLAR
B. S.



ANTON LONG
B. A.



CECIL C. CRAWFORD
BENJAMIN KELLAR
ANTON LONG



Mathematics

RAFAEL SANCHEZ—DIAZ
B. S., M. A., Ph. D.



DONALD M. HESTER
B. A.



RALPH L. MORRIS
B. A., M. S.



Mining & Metallurgy

ALVIN T. THOMPSON
B. S., M. S.



WILLIAM W. LONG
B. S.



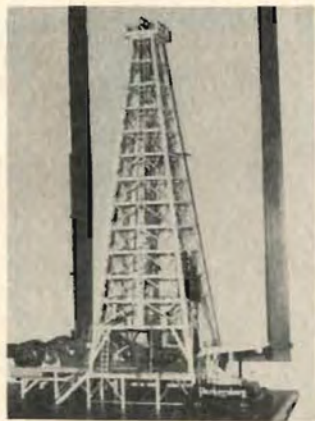
JOHN H. DISMANT
E. M.





Petroleum

CLARENCE B. FOLSOM
P. E.



石油工程 石油工程 石油工程 石油工程 石油工程

Physics



JOHN H. HARTY
B. S., Ph. D.



物理 物理 物理 物理 物理 物理 物理 物理 物理 物理



Physical Education

JAMES B. DELAMETER
S. B., A. M.



1948



President Emeritus

RICHARD H. REECE
B. S., A. M.

1948



Comptroller

FRED R. SWEET
M. E., M. S.



The Outer Office

RUBY B. GRIFFITH
Registrar



BETTY GIANERA
Switchboard Operator



EMILIA A. REASONOVER
Cashier



The Inner Office

KENNETH EDWARDS
Business Manager



MRS. DOROTHY HESTER
Bookkeeper



MRS. VIVIAN V. WILLIAMS
Secretary to Director

MRS. HORTENSE BULLOCK
Voucher Clerk



MRS. CLARA R. COLSTON
Clerk





Bureau of Mines

E. C. ANDERSON
Director



RICHARD C. NORTHUP,
DONN M. CLIPPENGER,
AND PHILIP MCKINLAY.



Standing: Carol Chenot,
Jerry Mayes, Betty Ferrati.
Seated: Marian L. Burks.



The Library

W. MARTIN SPEARE
B. S.



MILLCENT RACHWAL





The Dormitories

LILLIAN HERKENHOFF
Matron



1948

U
S
N
A
V
Y

Buildings & Grounds

HAL KERR
Superintendent



Maintenance

J. D. SULLIVAN
Superintendent



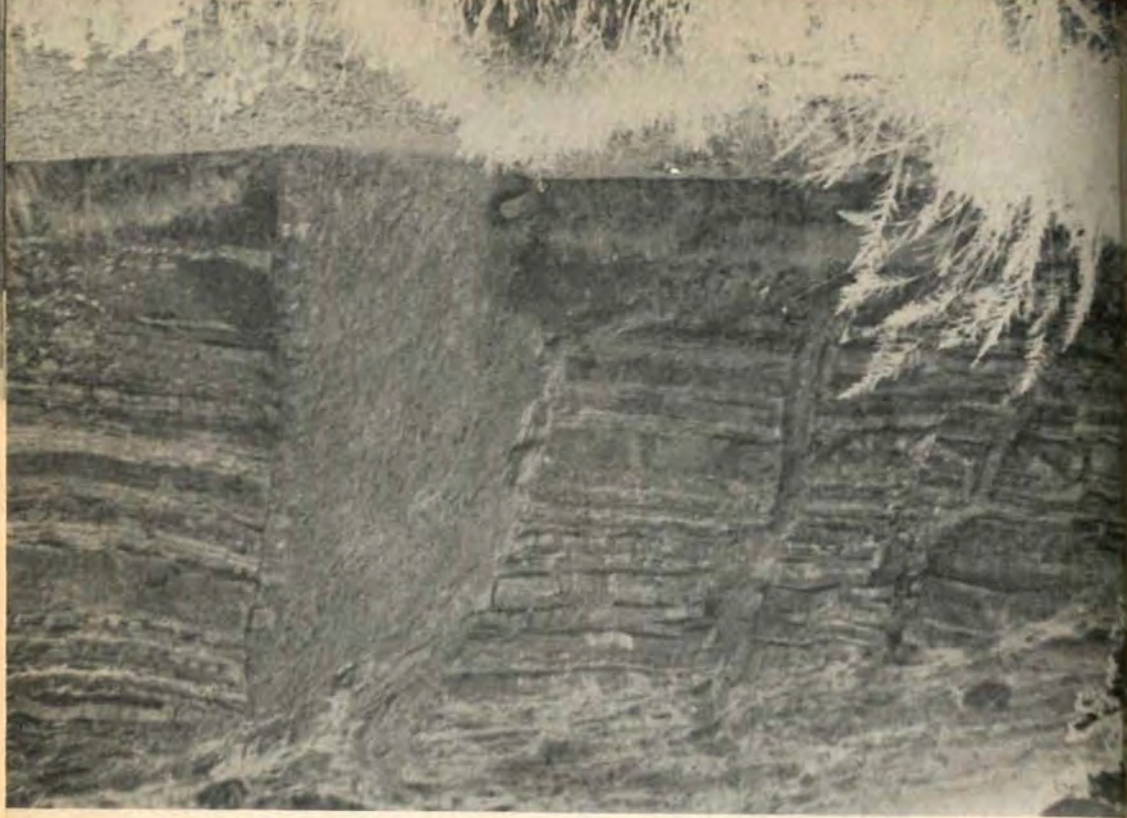
Front row: Cornelio Ortiz, Ramon Greigo, Samuel Cuellar, Flaviano Marquez. Back row: Henry Jojola, Cleona Williamson, J. D. Sullivan, Willie Thais.



CLEONA WILLIAMSON

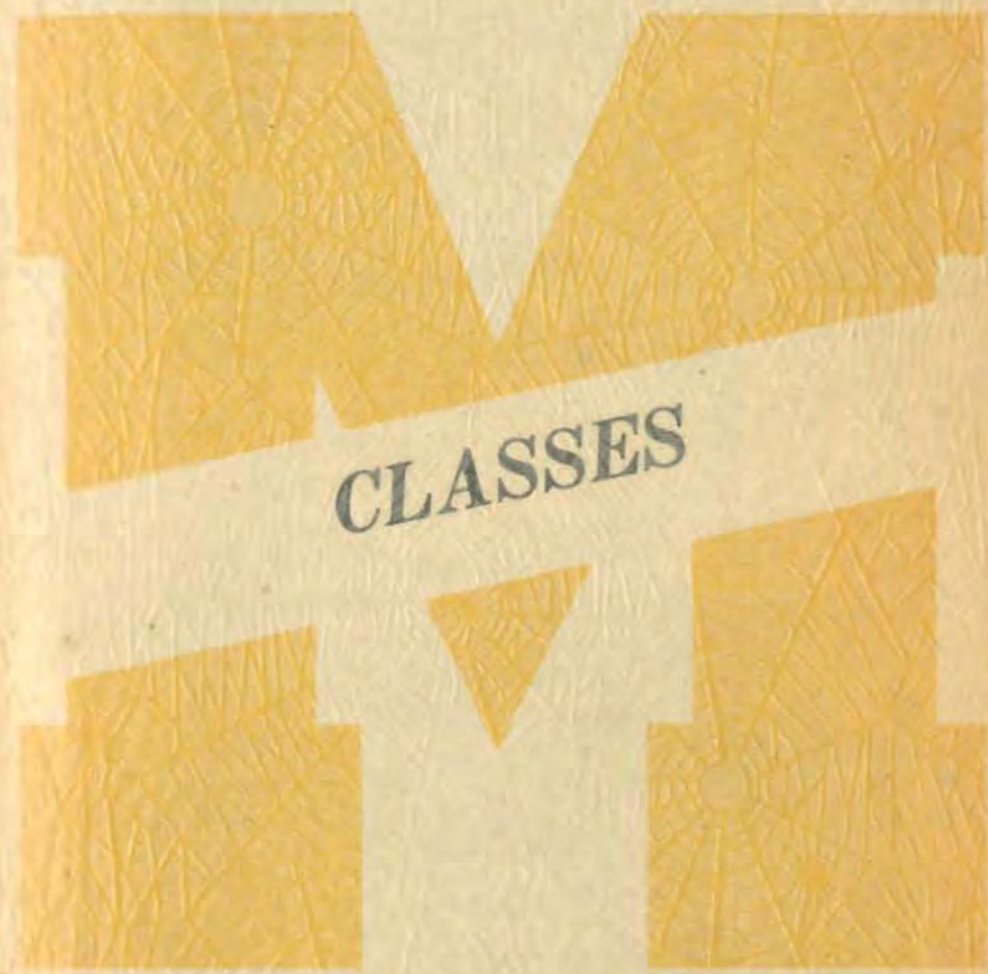
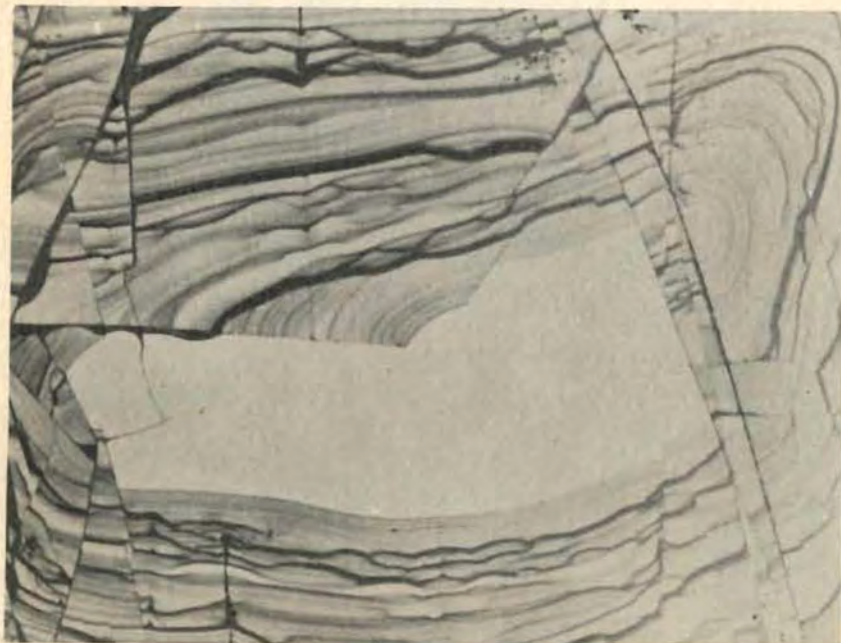
1948

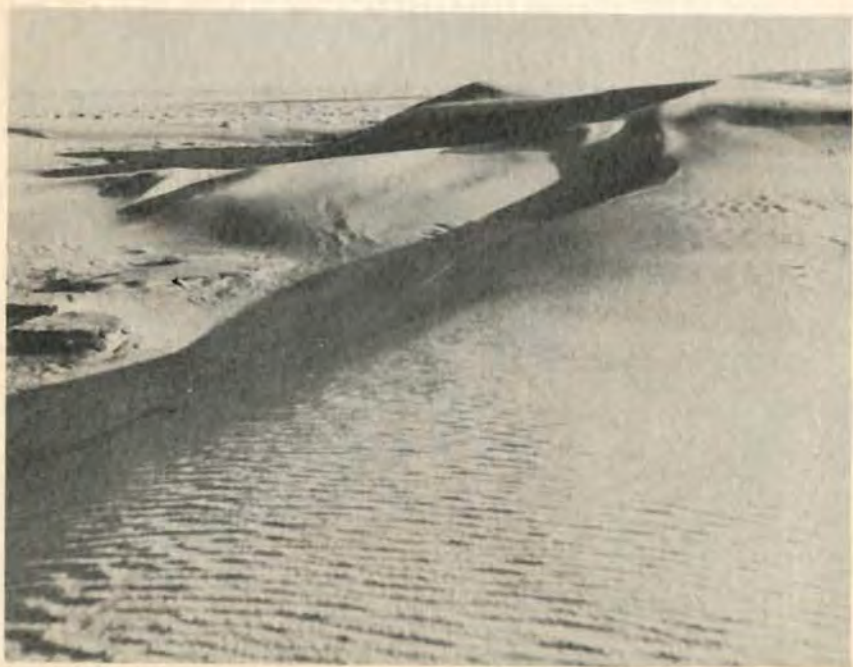
U
S
N
A
V
Y



A dike

Structure in marble





Seniors



ROY BLANKLEY, JR. Petroleum
"Filbert" ALBUQUERQUE, N. M.

A. A. Committee, 3; Student Council, 3, 4; "M" Club, 1, 2, 3, 4; Cooney Mining Club, 2, 3, 4; Varsity Basketball, 1, 2, 3; Varsity Track, 1; Varsity Tennis, 1, 2, 3; Intramural Softball, 1, 2, 3, 4; Track, 1, 2; Basketball, 1, 2, 3, 4; Tennis, 1, 2, 3, 4; Volleyball, 1, 2, 3, 4; 49ers Committee, 4.

A B.T.O. and no malarkey!



ANDREW H. CARPENTER . . Petroleum
"Andy" EL PASO, TEXAS

Cooney Mining Club, 4; Rifle Club, 4; 49ers Committee, 4.

The Gentleman from Texas.

GEORGE R. CHENOT Geology
"Pappy" NORTH CANTON, OHIO

A. A. Committee, 2, 3; Student Council, 2, 3; Secretary-Treasurer, 2; Vice President, 3; Class Treasurer, 2; Gold Pan Staff, 4; Geological Society of New Mexico, 3, 4; Engineers Club, 4; Intramural Softball, 2, 3, 4; Basketball, 2, 3; Petrology Lab Assistant, 3; Geology Lab Assistant, 4; St. Pat, 3; 49ers Committee, 4.

Who ever heard of "ground" water?



JOHN COCUBINSKY Metallurgy
"Cotch" NEW YORK, N. Y.

A. A. Entertainment Committee, 4; Varsity Basketball, 1; "M" Club, 1, 2, 3, 4; Engineers Club, 4; Secretary, 4; Intramural Softball, 1, 3, 4; Basketball, 3, 4; Volleyball, 3, 4; Athletic Assistant 3; Chemistry Assistant, 4; Intramural Manager, 4; 49ers Committee, 3, 4.

An innocent victim of
"roommate-itis"





JOHN K. DIETZ Metallurgy
"Johnnie" HARRINGTON PARK, N. J.

Cooney Mining Club, 3, 4; Photography Club, 3, 4; Rifle Club, 3; Chemistry Assistant, 3; 49ers Committee, 3.

His nickname should be "Busy."



JOSEPH S. HORTON Geology
"Joe" VALLEY-COTTAGE, N. Y.

A. A. Committee, 4; President, 4; Student Council, 4; President, 4; Varsity Tennis, 3; Intramural Softball, 2, 3, 4; Basketball, 1, 2, 3, 4; Track, 2; Tennis, 2, 4; Volleyball, 3, 4; Football, 1, 2; Chemistry Assistant, 3; 49ers Committee, 3, 4.

Old Double-Trouble

CLYDE W. ICKES Civil
"Bill" BERLIN, PA.

Class Secretary-Treasurer, 4; Cooney Mining Club, 1, 2; Intramural Softball, 1, 2, 3; Basketball, 1, 2; Football, 1, 2; Volleyball, 4; Chemistry Assistant, 3; 49ers Committee, 4.

He's no blabbermouth!



WOODROW J. LATVALA Mining
"Woody" SOCORRO, N. M.

Student Council, 1; Engineers Club, 4; Assistant, Engineering Department, 1, 2, 3, 4; 49ers Committee, 4.

One of those roses which blush unseen—
in the back booth at the Capital.





ARTHUR S. LEES Geology
"Art" .. OAK LAWN, ILL

Engineers Club, 4; Cooney Mining Club, 2, 3, 4; Vice President, 3; Geological Society of New Mexico, 3, 4; Photography Club, 3, 4; Lapidary Club, 2, 3, 4; Assistant, Engineering Department, 3.

"I'd like to ask a question."



JESUS M. LUNA Metallurgy
"Tuso" SOCORRO, N. M.

Gold Pan Staff, 4; Engineers Club, 4; Intramural Softball, 1, 2, 3; Basketball, 1, 2, 3, 4; 49ers Committee, 4.

Hates the thought of graduation 'cause then he'll have to work.

FRANCIS J. McCAVITT Mining
"Mac" ANACONDA, MONT.

Student Council, 3; Class President, 4; Engineering Club, 4; Vice President, 4; Cooney Mining Club, 4; Photography Club, 4; 49ers Committee, 4.

"A beer? . . . Yeah, I guess so."



EDWARD A. MAHONEY Civil
"Ted" WICHITA, KAN.

Class Secretary-Treasurer, 3; Engineering Club, 4; Treasurer, 4; Assistant, Engineering Department, 3, 4; 49ers Committee, 4.

"Now just a minute; let's get this straight."





FERNANDO MEDRANO Mining
"FERDY" EL PASO, TEXAS

Cooney Mining Club, 3, 4; Rifle Club, 3, 4; President, 4; 49ers Committee, 4.

A law-abiding citizen



HARRY R. NORRIE Mining
"Canuck" AMOS, QUEBEC

49ers Committee, 4.

"Nah, George ain't my uncle."

THOMAS A. OLSON Metallurgy
"Tom" NEW YORK, N. Y.

Student Council, 2, 3; Class Vice President, 1, 4; Porphyry Business Manager, 4; Engineers Club 4; "M" Club, 1, 2, 3, 4; Cooney Mining Club, 1, 2, 3, 4; Varsity Basketball, 1; Intramural Softball, 1, 2, 3, 4; Manager, 3; Basketball, 3, 4; Manager, 2; Tennis, 2, 3; Volleyball, 2, 3; Football, 1; Athletic Assistant, 1, 3; Metallurgy Assistant, 4; 49ers Committee, 4.

The secret passion of a myriad of misty-eyed maidens.



H. LOUIS PLANSOEN Mining
"Lou" CORNELIUS, ORE.

49ers Committee, 4.

"Girls! I'll be there."





JACK W. REINHART Mining
and Geology
"Chief" KOKOMO, IND.

Student Council, 1, 2, 3, 4; Vice President, 3; A. A. Committee, 3; Vice President, 3; A. A. Entertainment Committee, 2; Class Treasurer, 1; Class President, 2, 3; Gold Pan Sports Editor, 2, 3; Porphyry Editor-in-Chief, 4; Engineers Club, 4; "M" Club, 2, 3, 4; Cooney Mining Club, 1, 2, 3, 4; President, 4; Janitors Union, 2; Vigilantes, 2; Lapidary Club, 2, 3, 4; Geological Society of New Mexico, 3, 4; Rifle Club, 1, 4; Photography Club, 4; Varsity Basketball, 1, 2; Varsity Track, 1, 2; Intramural Softball, 2, 3, 4; Baseball, 1; Football, 1; Basketball, 1, 2, 3, 4; Manager, 1, 2; Track, 1, 2; Tennis, 1, 2, 3, 4; Volleyball, 3, 4; Handball, 1, 2; Swimming, 1; Mineralogy Lab Assistant, 3, 4; Petrology Lab Assistant, 4; St. Pat, 3; 49ers Committee, 3, 4.

A gentle, sober soul among a mob of rounders.



ROY G. RUSSELL Geology
"Jake" MONROE, LA.

Engineers Club, 4; 49ers Committee, 4.

"Very funny!"

NED STEWART Mining
"Stew" DELANO, CAL.

Student Council, 4; Engineers Club, 4; Intramural Softball, 2, 3, 4; Volleyball, 3, 3, 4; Library Assistant, 3; Assistant, Engineering Department, 4; 49ers Committee, 3, 4.

"This high altitude sure develops their lungs, doesn't it?"



WILLIAM W. WITTMAYER .. Mining
"Witty" NEW YORK, N. Y.

Class Secretary-Treasurer, 1; Intramural Softball, 1, 2, 3, 4; Basketball, 1, 2; Tennis, 3, 4; Volleyball, 4; Chemistry Assistant, 2, 3; 49ers Committee 3, 4.

A newlywed, and Norrie's roommate; the situation inspiring "Temptation."





ROBERT W. ZWICKY Mining
"ZWICK" SOCORRO, N. M.

Gold Pan Staff, 4; Engineers Club,
4; President, 4; Coney Mining Club,
1, 3, 4; Intramural Softball, 3, 4;
Basketball, 3, 4; Volleyball, 3, 4;
Chemistry Assistant, 3, 4; 49ers
Committee, 4.

"I got an 'A',—what did you get?"

S
O
F
T
B
A
L
L



Front row (left to right): Reinhart, Wittmeyer, Stewart, Olson.
Back row: Marcus Horton, Cocubinsky, Zwicky. Not present
for picture: Blankley, Chenot.

Senior Sports

VOLLEYBALL



Front row, left to right:
Wittmeyer, Stewart, Rein-
hart. Back row: Horton,
Cocubinsky, Zwicky. Not
present for picture: Blank-
ley.



B
A
S
K
E
T
B
A
L
L

Front row, left to right: Reinhart, Olson, Wittmeyer. Back row: Horton, Zwicky, Cocubinsky. Not present for picture: Blankley, Luna.

Left to right: Jones, Jones, Jones. Sokolnikoff, Jones and Jones.



C
H
E
S
S



Juniors



WILLIAM AKERS Petroleum
"Shakey" Webster Groves, Mo.

Student Council, 2; Class Vice President, 3; Intramural Softball, 3; Basketball, 2, 3.



RICHARD C. ANDERSON Mining
"Dick" Belen, N. M.

Student Council, 1, 2; Cooney Mining Club, 1, 2; Lapidary Club, 2; Engineers Club, 3; Intramural Basketball, 1, 2, 3; Chemistry Assistant, 2.



RAY WAYNE BALLMER Mining
"Peach Fuzz" Santa Rita, N. M.

Student Council, 3; Lapidary Club, 3; Engineers Club, 3; Cooney Mining Club, 3.



MILTON H. BARBER Petroleum
"M. H." Santa Rita, N. M.

Cooney Mining Club, 3; Intramural Softball, 3.



GEORGE H. BREWER Metallurgy
"Brew" Aztec, N. M.

Class President, 2; Cooney Mining Club, 2, 3; "M" Club, 1, 2, 3; Varsity Basketball, 1; Intramural Softball, 2; Basketball, 2, 3.



WILLIAM CARNICOM Geology
"Bill" Walbridge, Ohio

Gold Pan Staff, 3; Cooney Mining Club, 1; Intramural Softball, 2; Basketball, 3.



CECIL V. COFFEY Geology
"Red" Columbus, Ohio

Associate Editor Porphyry, 3; Engineers Club, 3; Cooney Mining Club, 3; Lapidary Club, 2, 3.



THOMAS E. COLSTON . . . Geophysics
"Tom" Chattanooga, Tenn.



GORDON P. DANIELS Mining
Modesto, Cal.

Engineers Club, 3.



WILLIAM L. DONOVAN Mining
"Bill" Omaha, Nebr.

Engineers Club, 3.



ROBERT J. FERRANTI Metallurgy
"Jay" Raton, N. M.

Engineers Club, 3; Intramural Softball,
1, 2, 3; Basketball, 2, 3.



DONALD K. GOLDING Metallurgy
"Don" New York, N. Y.

Engineers Club, 3; Cooney Mining Club,
2, 3; Photography Club, 2, 3; Intramural
Softball, 3; Manager, 2; Volleyball, 2, 3.



CHESTER H. GREEN Petroleum
"Chet" Monroe, La.

Student Council, 2; Class Secretary-
Treasurer, 2; Gold Pan Circulation
Manager, 2; Staff, 3; Cooney Mining
Club, 1, 2, 3; Chemistry Assistant, 2, 3;
49ers Committee, 2, 3.



JOHN D. GRIMSLEY Metallurgy
"Magooch" Barnesville, Ohio

Intramural Softball, 1, 2, 3; Basketball,
1, 2, 3.



EDWARD W. HANSON Geology
"Handsome" Kansas City, Mo.

Intramural Softball, 3; Basketball, 3.



ROBERT W. HARCUS Metallurgy
"Bob" Van Nuys, Cal.

Photography Club, 3; Secretary, 3; In-
tramural Softball, 1, 2, 3; Volleyball, 2;
Football, 1; 49ers Committee, 3.



HOWARD J. HUSING Mining
Lynbrook, N. Y.

Student Council, 3; Photography Club, 3.



HENRY L. KARNES, JR. Petroleum
Longview, Texas

Student Council, 2, 3; Secretary-Treas-
urer, 2; A.A. Committee, 2; Secretary-
Treasurer, 2; Class Secretary-Treasurer,
1, 2, 3; "M" Club, 2, 3; Cooney Mining
Club, 1, 2, 3; Photography Club, 2;
Varsity Tennis, 2; Intramural Softball,
2, 3; Basketball, 1; Tennis, 1, 2, 3;
49ers Committee, 3.



ROBERT H. LANE Mining
"Blank" Berlin, Pa.

Cooney Mining Club, 1, 2; Intramural
Softball, 1, 2, 3; Basketball, 1, 2, 3, 4;
49ers Committee, 3.



RICHARD M. LARSON Geology
"Dick" El Paso, Texas

Engineers Club, 3; Cooney Mining Club,
1, 2, 3; Gold Pan Staff, 1, 2.



ERIC H. LASSEN Mining
"Swede" Bisbee, Ariz.

Intramural Softball, 1, 2; Basketball, 1, 2; Volleyball, 3.



JAMES T. LAWYER Metallurgy
"Tom" Deming, N. M.

Lapidary Club, 3; President, 3.



LYLE F. MILLER Mining
Waukesha, Wis.

Intramural Softball, 3.



WARNER M. ORR Mining
"Iron Ore" Craig, Mo.

Gold Pan Staff, 2, 3; Cooney Mining Club, 3; Vice President, 3.



ALVIN V. POSS Geology
"Desert Rat" Antigo, Wis.

Engineers Club, 3; Cooney Mining Club, 2, 3; Lapidary Club, 3; Library Assistant, 2; Minstrel, 3.



DONALD E. SAMPLES Mining
"Gene" Boonville, Ind.

Intramural Softball, 3; Volleyball, 3; Basketball, 3.



ROBERT E. SYKES Mining
Long Beach, Cal.

Photography Club, 3; Lapidary Club, 2, 3; 49ers Committee, 3.



RICHARD A. WALLER Mining
Chicago, Ill.

Photography Club, 3; Rifle Club, 1, 2, 3; Assistant, Engineering Department, 2.



THOMAS O. WEBB Petroleum
"Spider" Santa Rosa, N. M.

Class President, 2; Varsity Basketball, 2; Tennis, 2; Baseball, 2; Intramural Softball, 3; Tennis, 3; Assistant, Petroleum Department, 3.



LLOYD E. GILL Metallurgy
Belleville, N. J.

GORDON H. GRAY Petroleum
 "Gord" Socorro, N. M.



Sophomores

1948

1948



WILLIAM E. ADKINS Mining
Santa Rita, N. M.

Lapidary Club, 2; Intramural Softball,
1, 2; Basketball, 1, 2; Volleyball, 2.



HARLEY D. ALLEN Geophysics
"Al" South Shaftsbury, Vt.

Photography Club, 2.



JAMES H. AVERY Petroleum
"Jim" Shreveport, La.



ROGER L. BACH Petroleum
"Dutch" San Diego, Cal.

Cooney Mining Club, 2; Lapidary Club,
2; Intramural Softball, 1.



HENRY M. BAKER Mining
"Bake" Las Vegas, N. M.



JOHN F. BAKER Mining
"Goldbricker" Essex, N. Y.

Cooney Mining Club, 2; Intramural
Volleyball, 2.



ATLEE D. BECKERDITE .. Geophysics
"Beck" Macksville, Kan.

Intramural Volleyball, 2.



ROGER H. BEELER Petroleum
"Beak" Las Vegas, N. M.

Photography Club, 2; Lapidary Club, 2;
Vice President, 2; Intramural Softball,
1, 2; Basketball, 1, 2; Volleyball, 2.



DORMAN A. BELDEN Geology
Dickenson, N. D.

Rifle Club, 1, 2.



JAMES V. BELL Mining
"Jim" Boothbay Harbor, Me.

Intramural Softball, 1, 2.



ANTHONY W. BLASS Mining
New York, N. Y.

Photography Club, 2.



JAMES H. BROCKMAN
"Brock" Carlsbad, N. M.

Class Treasurer, 1; Cooney Mining Club
1, 2; Photography Club, 1; Intramura
Softball, 1, 2.



HAROLD H. BROWN Geology
"Harry" New York, N. Y.

Cooney Mining Club, 1, 2; Rifle Club, 1;
Intramural Softball, 1, 2; Volleyball, 1, 2.



ROBERT C. BYRD Mining
Bryson City, N. C.

Class Vice President, 2; Cooney Mining
Club, 1, 2; Intramural Softball, 1, 2;
Basketball, 1, 2; Volleyball, 1, 2.



ANTHONY CAFARELLI Mining
"Tony" Raton, N. M.

Cooney Mining Club, 1, 2; Intramural
Softball, 1, 2; Basketball, 1, 2; Volley-
ball, 1, 2.



ALAN H. CHEETHAM Geology
Taos, N. M.

Class Secretary, 2; Gold Pan Humor
Editor, 1; Co-Editor, 2; Library Assist-
ant, 1, 2.



RANDALL T. CHEW, III Geology
"Randy" Covina, Cal.

Intramural Volleyball, 2; Minstrel, 2.



MICHAEL A. CLEVENGER .. Geophysics
"Mike" Houston, Texas

Gold Pan Advertising Manager, 1;
Photography Club, 1, 2; Treasurer, 2;
Intramural Softball, 2.



HUGH C. COLMAN Geology
"Hughie" Pasadena, Cal.

Cooney Mining Club, 2; Rifle Club, 2.



BILLY J. CONTINE Petroleum
"Bill" Las Vegas, N. M.

Lapidary Club, 2; Intramural Softball, 2.



RICHARD S. CRIAL Mining
"Hard Rock" Wenatchee, Wash.

Class Vice President, 1; Rifle Club, 1, 2;
President, 1; Lapidary Club, 2.

THORNTON DAVIS, 2ND Geology
"Spook" Hingham, Mass.

Cooney Mining Club, 2.



GEORGE G. DICKINSON .. Metallurgy
"Dick" El Paso, Texas

Photography Club, 2.



JAMES G. DOHERTY Mining
"Jim" Malartic, Quebec

Cooney Mining Club, 3; Lapidary Club, 3;
Varsity Baseball, 1; Intramural Soft-
ball, 1; Tennis, 1.



PAUL S. DULETSKY Metallurgy
Detroit, Mich.



PETER S. ELY Mining
"Pete" Gloucester, Mass.

Intramural Softball, 2; 49ers Committee,
2; Minstrel, 2.



ELWOOD EUTERMOSER .. Metallurgy
"Woody" Philadelphia, Pa.

Student Council, 2; Intramural Softball,
1, 2; Basketball, 1, 2; Tennis, 1, 2;
Volleyball, 2; Minstrel, 2.



FRANK L. FLEISHMAN Geology
Philadelphia, Pa.

Rifle Club, 2; Minstrel, 2.



1948

1948



CHARLES W. FLEMING Mining
Spencer, Iowa
Intramural Softball, 2; Basketball, 2.



ROY C. FLEMING Petroleum
Morganton, N. C.
Intramural Softball, 2.



FRANK P. GALLI, JR. Petroleum
Jackson Heights, N. Y.
Intramural Softball Manager, 1, 2.



FRED P. GIESE Metallurgy
"Red" Stratford, Conn.
Intramural Softball, 1; Volleyball, 1;
Cooney Mining Club, 2; Minstrel, 2.



NORMAN L. GRAUERHOLZ ... Mining
"Skunkie" Memphis, Nebr.
Cooney Mining Club, 2; Lapidary Club, 2.



DARWIN E. GREGORY Metallurgy
"Greg" Long Beach, Cal.



HERBERT R. HALL
Lincoln, Nebr.

B. VICTOR HANSEN Geology
"Vic" Banning, Cal.
Cooney Mining Club, 1, 2; Rifle Club, 1,
2; Lapidary Club, 2.



KENNETH L. HILL Metallurgy
"Ken" Socorro, N. M.



JACK H. HUNT Metallurgy
"Mike" Grants, N. M.
Intramural Tennis, 2; Volleyball, 2.



ERNEST A. JONAS Metallurgy
"Ernie" New York, N. Y.



CECIL L. KERLEY Geology
Hobbs, N. M.
Intramural Softball, 1, 2; Basketball, 1,
2; Volleyball, 1, 2.



ROBERT H. KING Petroleum
"Bob" Ridgetop, Tenn.
Intramural Softball, 1, 2.



JOEL KOBELIN Metallurgy
"Joe" Bayonne, N. J.
Porphyry Photographer, 2; Photographic
Club, 1, 2; President, 2; Intramural
Softball, 1, 2; Tennis, 1, 2.





LEON L. LARCHE Mining
San Francisco, Cal.

Cooney Mining Club, 1, 2; Lapidary
Club, 2; Rifle Club, 2.



DONALD D. LLOYD Petroleum
"Sunkist" Alhambra, Cal.

Intramural Softball, 2.



JOHN G. MCCASLIN Geophysics
"Mac" Broken Bow, Nebr.

Intramural Softball, 2; Tennis, 2; Cooney
Mining Club, 2.



CHARLES E. MCLAUGHLIN ... Mining
"Mac" Columbus, Chic

Lapidary Club, 2.



J. DEWEY MCLEHANEY, JR. .. Mining
"Mac" Santa Rita, N. M.

JAMES R. MCNAMARA Mining
"Mac" Clinton, Mass.

Intramural Volleyball, 2.



HARRY P. MATERNE Metallurgy
"Mat" St. Louis, Mo.

Intramural Softball, 1, 2; Minstrel, 2.



DAVID MATTER Metallurgy
"Dave" Philadelphia, Pa.

Student Council, 2; Gold Pan Staff, 2;
Intramural Softball, 1, 2; Basketball, 1,
2; Volleyball, 1, 2; Athletic Assistant,
1, 2.



ROBERT B. MAYES Petroleum
"Bob" Waco, Texas

Minstrel, 2.



MARVIN C. MILLER Mining
"Curly" Storm Lake, Iowa



CLARENCE O. MORRISON Geophysics
"Moe" Carlsbad, N. M.

Class Treasurer, 2; Intramural Softball,
1, 2; Basketball, 1, 2; Volleyball, 1, 2.



MARVIN NAPACK Metallurgy
"Napsack" Brooklyn, N. Y.



GILBERT D. NOLAND, JR., . Petroleum
"Gib" Bloomfield, N. M.

Intramural Softball, 1, 2.



CHARLES S. OVERMEIER Mining
"Chuck" Los Angeles, Cal.

Minstrel, 2.





EDWARD J. PAWLOWSKI . . . Metallurgy
"Ed" Cleveland, Ohio

Cooney Mining Club, 1, 2; Intramural Softball, 1, 2.



THOMAS O. PERROTT Geology
"Red" Vandergrift, Pa.

Cooney Mining Club, 2; Secretary-Treasurer, 2; Intramural Softball, 2; Volleyball, 2.



PHILLIP G. PIGOTT
Murphysboro, Ill.



CHESTER A. RACHWAL Mining
"Chet" Niagara Falls, N. Y.

Intramural Softball, 1, 2; Basketball, 1, 2.



LOUIS P. REGOTTI Mining
"Lou" Coraopolis, Pa.

Intramural Softball, 1, 2.



KENNETH M. REIM Mining
"Kenny" Ashland, Nebr.

Cooney Mining Club, 2; Lapidary Club, 2.



ROBERT R. REYNOR Petroleum
"Feet" Huntington Beach, Cal.

Rifle Club, 1; Intramural Softball, 2; Chemistry Assistant, 1, 2.



ROGER H. RICHMAN Mining
Hackensack, N. J.

Gold Pan Co-Editor, 2; Intramural Softball, 2.



DONALD H. RICHTER Geology
"Ric" Middletown, N. Y.

Lapidary Club, 1, 2; Secretary, 2; Intramural Softball, 1, 2; Volleyball, 2.



VINCENT G. RUMPF Mining
"Vinnie" New York, N. Y.

Student Council, 2; Secretary-Treasurer, 2; A.A. Committee, 2; Secretary-Treasurer, 2; Cooney Mining Club, 2; Intramural Softball, 1, 2; Lapidary Club, 2; 49ers Committee, 1, 2; Minstrel, 2.



RAYMOND L. SENN Mining
"Link" Chicago, Ill.

Class President, 2; Intramural Softball, 1, 2; Basketball, 1, 2; Minstrel, 2.



ARTHUR SHOCKLEY Mining
"Art" Albuquerque, N. M.

Intramural Softball, 2; Basketball, 2; Volleyball, 2.



LYNN L. SILVERTOOTH Geology
"Silver" Sarasota, Fla.

Rifle Club, 1, 2; Lapidary Club, 2; Minstrel, 2.



MARKO SIROVENA Mining
Chisholm, Minn.

Cooney Mining Club, 2.

五
四
三
二
一

五
四
三
二
一



ALEXANDER R. SMITH Mining
"Smitty" Springfield, Mass.

Intramural Softball, 1, 2; Basketball, 1, 2; Volleyball, 1, 2.



EDWARD M. SMITH Mining
"Eddie" Socorro, N. M.

Varsity Basketball, 1; Intramural Softball, 1, 2; Basketball, 1, 2; Volleyball, 1, 2.



RUPERT B. SPIVEY Petroleum
Fairmont, N. C.

Intramural Softball, 2.



PAUL M. STEVENS Mining
"Steve" Huntington, W. Va

THEODORE M. SZMYD Mining
Saegertown, Pa.

Cooney Mining Club, 1, 2; Intramural Softball, 1, 2.



FELIX TRUJILLO Mining
Socorro, N. M.



JOHN A. WEIR Mining
"Jack" Socorro, N. M.



T. D. WILKINSON, III Petroleum
"Wilkie" Louisville, Ky.



JOHN R. WILLETT Geophysics
Tucumcari, N. M.

Cooney Mining Club, 2.



RICHARD E. WITMAN Metallurgy
"Dick" Reading, Pa.

Lapidary Club, 2.



LEONARD R. WOEHLKE .. Metallurgy
Wauwatosa, Wis.



JOHN YURONKA Petroleum
Clifton, N. J.

Student Council, 1; Gold Pan Business Manager, 2; Intramural Softball, 1, 2; Basketball, 1, 2; Volleyball, 1, 2.



JAMES R. DOTY Geophysics
"Dick" Moline, Ill.

Intramural Softball, 1, 2; Basketball, 1, 2.; Minstrel, 2.



HERBERT F. GREEN Petroleum
Aruba, N. W. I.

Lapidary Club, 2; 49ers Committee, 2; Minstrel, 2.



EVERETT B. RAMSEY ... Geophysics
"Ev" Boston, Mass.

Minstrel, 2.

CHARLES F. BRINGE

JOHN I. COLEMAN
Midland, Md.

JAMES C. DOYLE Geology
"Jim" Croton Falls, N. Y.

JOHN M. DUNCAN .. Metallurgy
"Dunk" Hazelton, Ind.

FLORENTINO GUTIERREZ ...
..... Metallurgy
Socorro, N. M.

Photography Club, 2; Intramural
Volleyball, 2.

FRANK P. LANGLINAIS. . . Civil
"Lang" Lafayette, La.

DAVID L. KUCK
"Dave" Erlanger, Ky.

DANIEL J. LYNCH, JR. Petroleum
"Danny" .. New York, N. Y.

LOUIS L. LAW Geology
"Les" .. Fort Worth, Texas

JERMEY JOE MORRISON
Vinita, Okla.

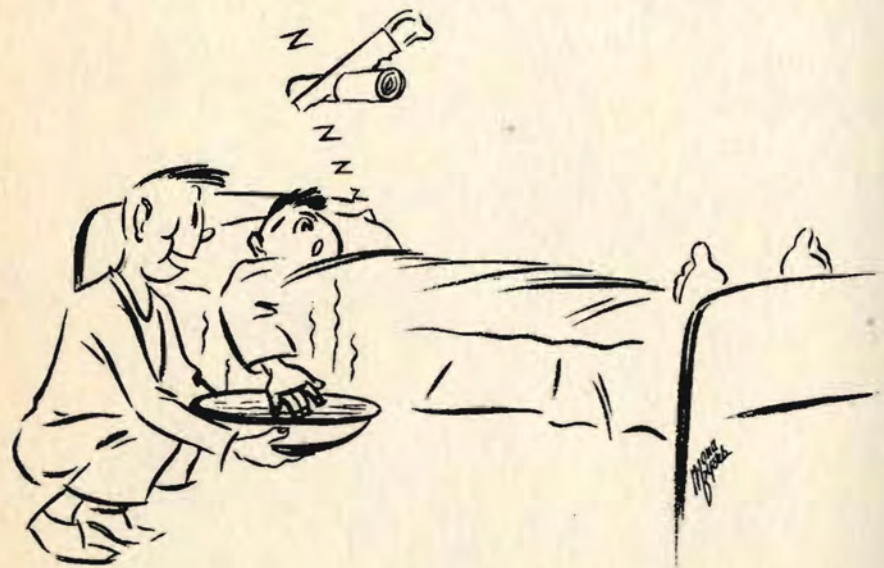
ALLEN F. MALLORY
Thomaston, Ga.

JAMES C. TOMLINSON
..... Petroleum
"Red"

ARCHIE L. NASH Geology
"Bud" Kannapolis, N. C.

Intramural Softball, 2; Basketball,
2; Volleyball, 2.





Freshmen



GEORGE G. ALHADATE
Oakland, Cal.

Intramural Basketball, 1.

JOHN W. ANDREWS Mining
Chicago, Ill.



JOHN D. AUMEN, JR. Geology
"Knobby" Braintree, Mass.

FLOYD J. BALENTINE Petroleum
"Skip" West Newton, Pa.

Lapidary Club, 1.



JOHN J. BORKERT
Michigan City, Ind.

CHARLES A. BURCH
Taos, N. M.



WILLIAM M. BYERS Metallurgy
"Bill" South Wales, N. Y.

Photography Club, 1; Lapidary Club, 1.

FRED V. CARRILLO Geology
Los Angeles, Cal.

Lapidary Club, 1; Intramura! Tennis, 1;
Minstrel, 1.



RALPH L. CHATFIELD Mining
"Chatt" Paonia, Col.

BRADFORD L. COLLINS Petroleum
"Brad" Newport Beach, Cal.

RALPH W. COTE, JR. Mining
"Blala" Honolulu, Hawaii

TOM L. CRESPIN Petroleum
"Brain" Socorro, N. M.

Intramural Softball, 1; Basketball, 1.



DONALD H. DEIBERT Geology
"Don" Bedford, Pa.

Photography Club, 1; Minstrel, 1.

LOUIS J. DEVEREAUX Mining
"Rex" Chicago, Ill.



JOHN K. DUFTON, JR. Geophysics
"Duffy" Clearfield, Pa.

ROBERT L. ELLINGSEN Mining
Wantagh, N. Y.

Rifle Club, 1; Lapidary Club, 1.



RICHARD J. FAIRSERVIS Mining
"Dick" Long Beach, Cal.

Cooney Mining Club, 1; Photography
Club, 1; Rifle Club, 1; Intramural Soft-
ball, 1.

JOHN A. FALK Petroleum
"Jack" Eden, Idaho

Photography Club, 1; Intramural Soft-
ball, 1.



RUDOLPH W. FEKETE
Hollywood, Cal.

CHARLES A. FRANKS Geophysics
Manchester, N. H.





ROBERT D. GOLD Geology
"Goldie" Riverside, Cal.

CREIGHTON GREGG
Morenci, Ariz.



THOMAS J. HAMMONS, JR. Petroleum
"Tom" Dale, Ill.

Student Council, 1.

THOMAS S. HARPER Geology
"Harp" Chicago, Ill.

Cooney Mining Club, 1; Rifle Club, 1.



LEROY HENDERSON Mining
Madrid, N. M.

FRAZIER C. HILL Mining
"Slim" Homer, Ga.



MAX B. JACOBSON Mining
"Jake" Ottumwa, Iowa

DWIGHT M. JOHNSON ... Geophysics
"Twilight" Alhambra, Cal.

Cooney Mining Club, 1; Minstrel, 1.



MERTON W. LALLMAN Geology
"Bill" Nickerson, Nebr.

Photography Club, 1; Intramural Tennis, 1.

ROGER B. LARSEN Geology
"Lars" Superior, Wis.

Intramural Softball, 1.



GORDON D. LAWRENCE .. Geophysics
"Madlock" Boston, Mass.

Minstrel, 1.

WILLIAM P. LEMOINE, JR. ... Mining
"Red" Paonia, Col.



WILLIAM J. LINTON Petroleum
"Bill" Newark, Ohio

SAUL R. LOCKE Metallurgy
"Load" Brooklyn, N. Y.

Gold Pan Staff, 1; Minstrel, 1.



GEORGE R. MCCAUGHREAN .. Geology
"Mac" Atlantic City, N. J.

49ers Committee, 1.

GERALD R. MCGINTY Petroleum
"Jerry" Long Island City, N. Y.

Cooney Mining Club, 1; Photography Club, 1.



GILBERT H. MCLRAVY
Jersey City, N. J.

THOMAS E. MEAHL Mining
"Tom" Brownstown, Ind.



DWIGHT C. MORGAN Mining
"Red" Bard, N. M.

DELMAR A. MOTYCKA Mining
"Doc" Leigh, Nebr.

Cooney Mining Club, 1; Rifle Club, 1; Secretary, 1.



NORMAN S. PICKETT Petroleum
"Dutch" Washington, Ind.

Photography Club, 1; Lapidary Club, 1.

JAMES L. POST Mining
"Jim" South Bend, Ind.

Cooney Mining Club, 1; Lapidary Club, 1.



WILLIAM POTASHNICK Petroleum
"Bill" Hackensack, N. J.

Gold Pan Staff, 1; Photography Club, 1;
Intramural Softball, 1; Minstrel, 1.

DONALD A. RYAN
Mt. Kisco, N. Y.



DAVID T. SANDERS Mining
"Dave" Paonia, Col.

FRED W. SCHNEIDER Petroleum
Valparaiso, Ind.

Intramural Softball, 1; Basketball, 1.



KENNETH D. SHAUB Metallurgy
"Ken" Baltimore, Md.

Class President, 1.

FRANK W. STEDMAN Petroleum
Tyringham, Mass.



DAVID J. STEVENS Mining
"Steamer" Paonia, Col.

PHILLIP G. STODDART Geology
"Flip" Maywood, Ill.

Gold Pan Photographer, 1; Porphyry
Photographer, 1; Photography Club, 1.



RONALD B. STONE Mining
"Rocky" Hutchinson, Kan.

Cooney Mining Club, 1; Rifle Club, 1;
Lapidary Club, 1; Intramural Softball, 1.

WILLIAM T. SULLIVAN Mining
"Sully" Bisbee, Ariz.



JAMES H. UTTERBACK Metallurgy
"Gismo" Monument, N. M.

CALVIN E. WATSON Petroleum
Las Vegas, N. M.



WILLIAM R. WATSON Geology
"Bill" Englewood, N. J.

Cooney Mining Club, 1; Rifle Club, 1;
Minstrel, 1; Lapidary Club, 1.

LEON B. WEBBER Petroleum
"Buck" Buckeye, N. M.

- NEAL W. BURR Geophysics Upland, Cal.
- JOE ARTHUR CASTILLO Petroleum Socorro, N. M.
- WILLIAM C. COLBERT Mining Farmington, N. M.
- CHARLES A. DICKMAN Gloucester, Mass.
- JOHN H. DICKMAN Gloucester, Mass.
- SEYMOUR J. DUNNE Mining Burbank, Cal.
- DONALD F. GLATCH Mining Milwaukee, Wis.
- JOE STEVE HUDANICK Geophysics Wood River, Ill.
- JOE B. LINN Petroleum Anchorage, Alaska
- JAMES H. MCROY, JR. Geology Ashland, Wis.
- JAMES L. PETERSON Geology Stratford, Iowa
- JOHN B. RHODES Silver City, N. M.
- RUSSELL L. WITT Taos, N. M.



OUR PHOTOGRAPHER

WHY, JOHN!



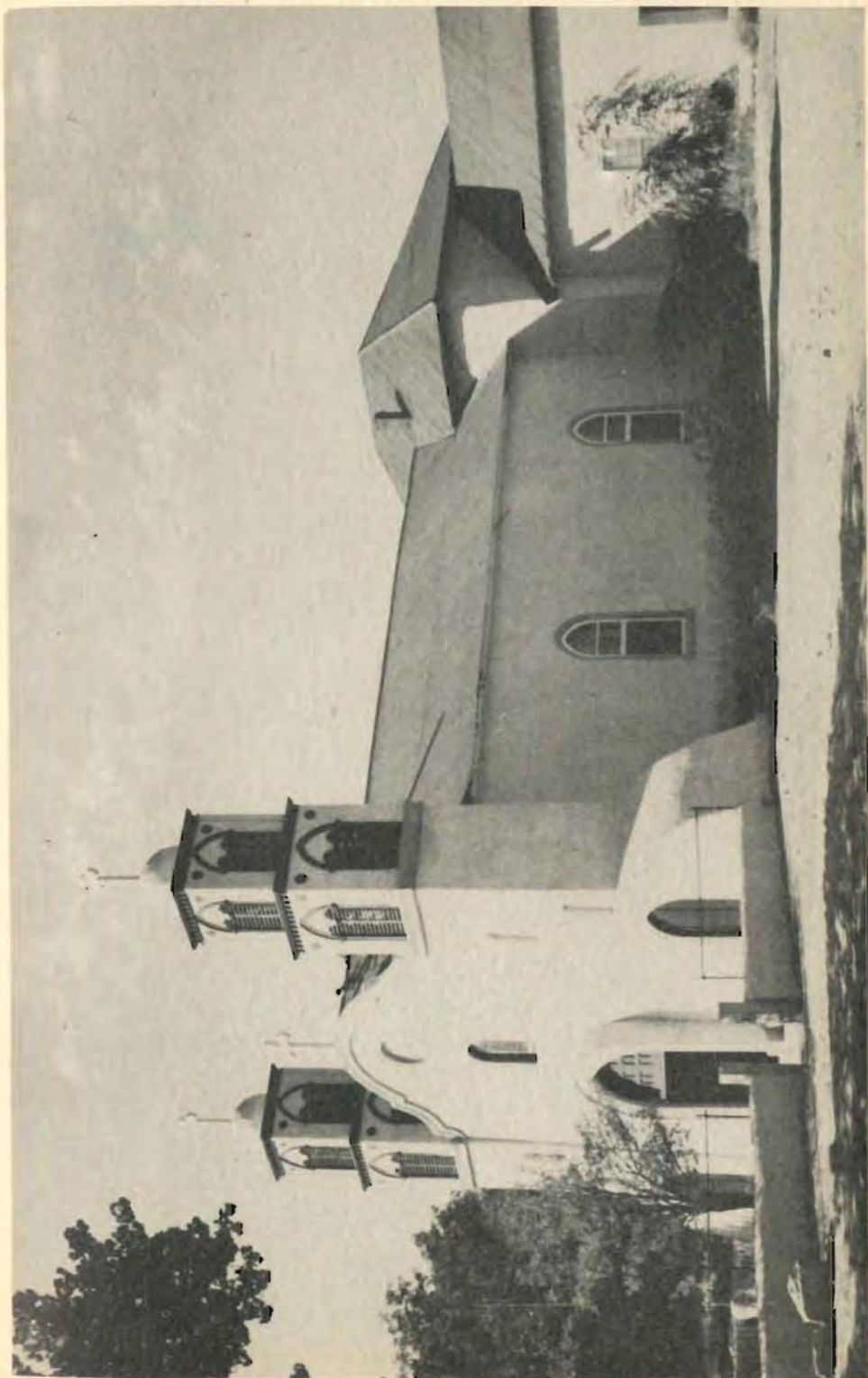
A-RIDIN'



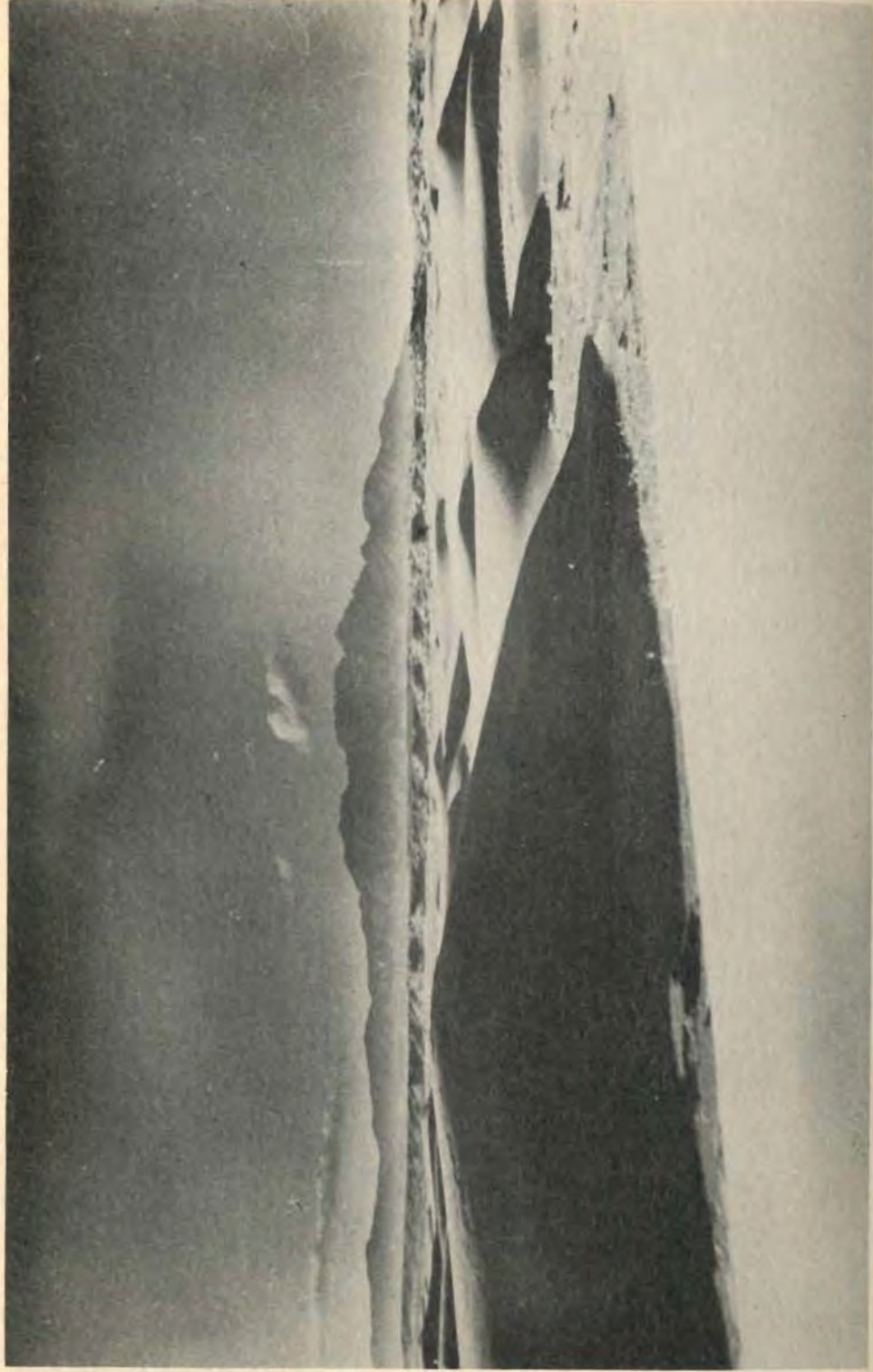
AND A-ROPIN'



1946



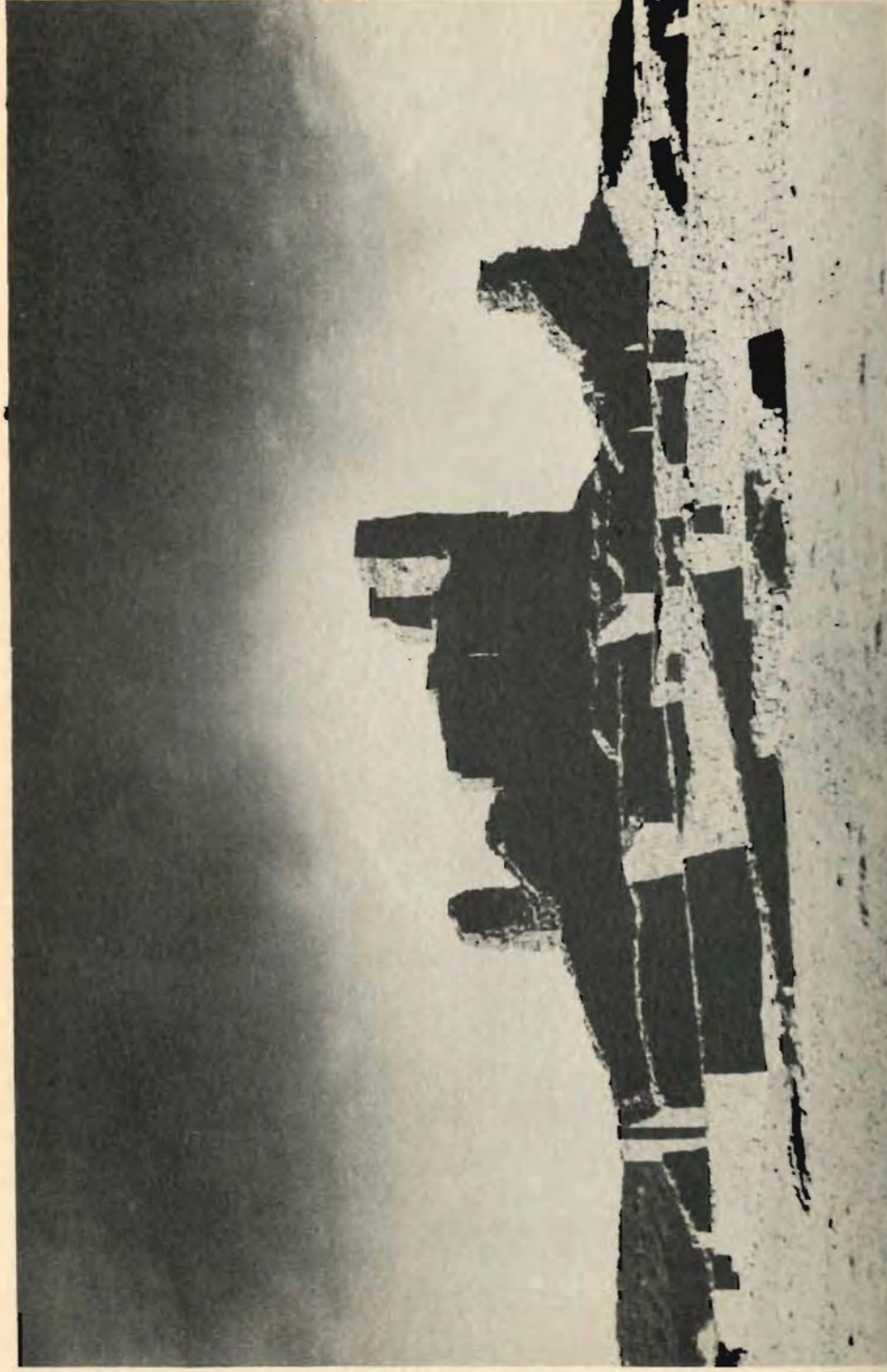
SAN MIGUEL CHURCH, SOCORRO



RIO SALADO AND SIERRA LADRONES

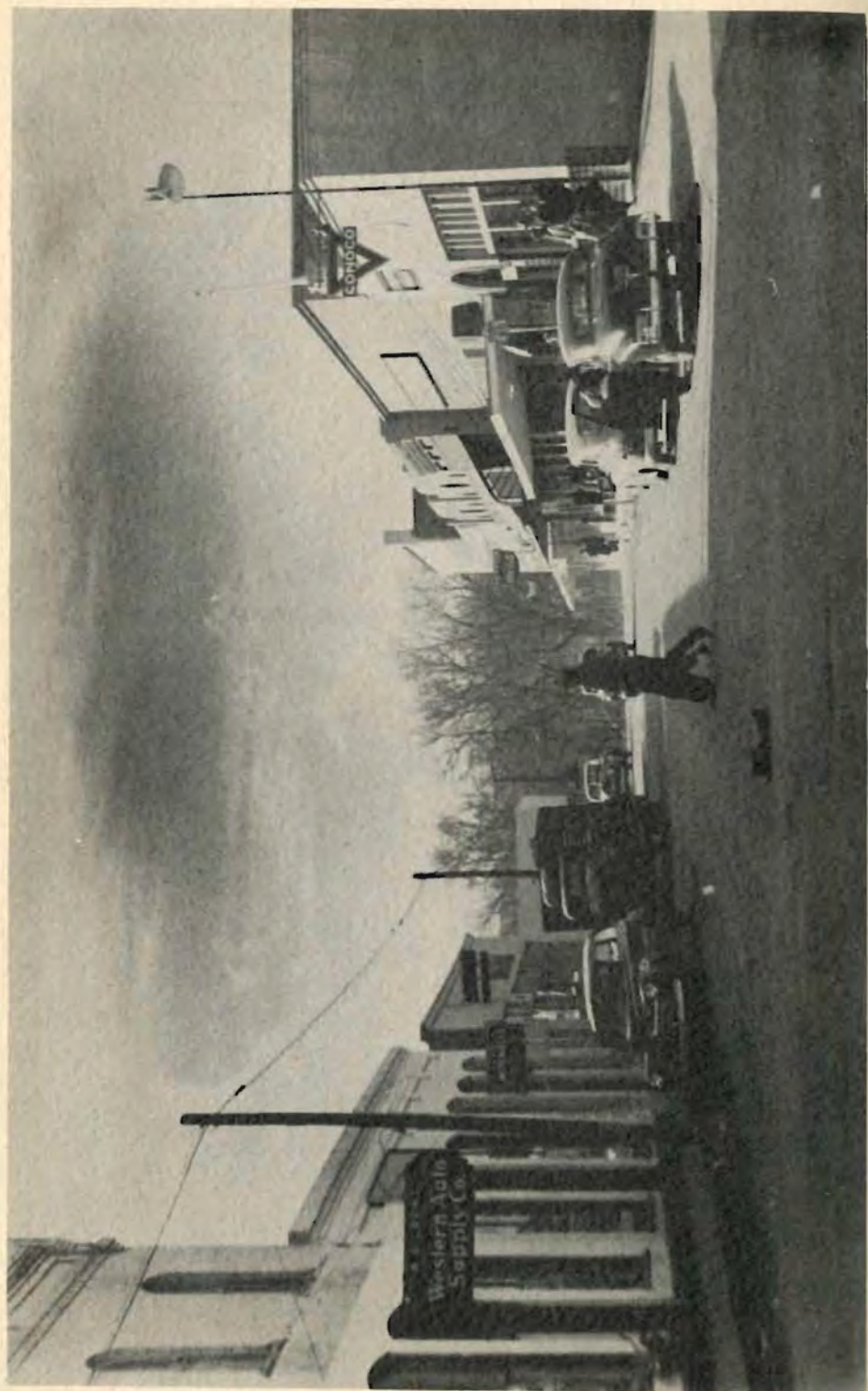


GRAN QUIVIRA



ABO RUINS (PIRO INDIAN PUEBLO)





SOCORRO





ORGANIZATIONS



Front row: Vinny Rumpf, Tom Hammons, Woody Eutemoser. Middle row: Howard Husing, Henry Karnes, Ray Ballmer. Back row: Jack Reinhart, Roy Blankley, Ned Stewart, Joe Horton. Not in picture: Dave Matter.

The Student Council

Student body business affairs are handled by the capable and duly elected members of the Student Council, four of whom are Seniors, three Juniors, two Sophomores, and one a Freshman.

The Student Council apportions student funds to the best advantage of the student body as a whole and supervises the arrangements for and the execution of the traditional student social and cultural activities.



JOE HORTON
President



Front row, left to right: H. Baker, Coffey, Perrott, Stewart, Poss, Rumpf, Dickinson, Reinhart, Stone, W. Watson.
Middle row: Prof. Smith, Bach, Marcus, Franks, Motycka, Post, Mr. Sweet.
Back row: Prof. W. Long, Reim, Carpenter, Napack, Larche, Prof. Thompson, Cheetam, Brockman, Colman, Overmeier, Willet, Carillo, Giese, Pawlowski, Sirovina, Lemoine, Cafarelli, Hanson, Brown, Colbert.

Cooney Mining Club

The A.I.M.E. Affiliated Student Society of the New Mexico School of Mines is the Cooney Mining Club. Again this organization has taken the initiative in arranging field trips, talks by men of recognized professional attainment, and movies on technical subjects. This club, the oldest extra-curricular organization on the campus, by its very purpose is assured of a long and active life.



JACK REINHART
President



Seated: Anderson, Reinhart, McCavitt (Vice President), Zwicky, Cocubinsky (Secretary), Poss.
Standing: Ballmer, Wittmeyer, Olson, Chenot, Lees, Coffey, Stewart

The Engineers Club

The Engineers Club, reactivated after a dormancy of several years, is composed of Juniors and Seniors who have merited scholastic recognition. Students in liberal arts educational institutions may not find their college work difficult, but every student of any reputable engineering school will agree that the student who has earned an average of B or better over a period of at least two years is deserving of some special recognition. Membership in the Engineers Club is dependent upon these qualifications.



ROBERT ZWICKY
President



Front: Byers, Kobelin. **Seated:** Stoddart, Dickinson, Sykes, Lees.
Standing: Husing, Clevenger, McCavitt, Zwicky.

The Photography Club

One of the newer organizations on the campus is the Photography Club, which is probably the busiest club of all. The dark room in Brown Hall is in almost constant use, and the photographic work of this book is the result of the industry of members of this valuable association.



JOEL KOBELIN
President



Front row: Waller, Medrano, V. Hansen, Reinhart.
 Middle row: Stone, Dickinson, Motycka, Colman, Carillo, W. Watson.
 Back row: Silvertooth, Borkert, Ellingson, Lloyd, Carpenter.

The Rifle Club



FERNANDO MEDRANO
 President

The Rifle Club, formerly known as the Porphyry Rifle Club, is also in the throes of reactivation. A tremendous forward step was taken and a greatly stimulated existence was assured with the affiliation of the club with the National Rifle Association. Facilities include several excellent outdoor range locations as well as the privilege of using the Armory indoor rifle range.

"M" Club

Two years without athletic competition have reduced the membership of the "M" Club to seven, four of whom are Seniors.



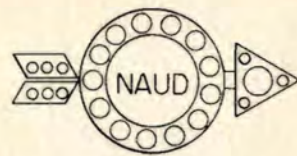
BLANKLEY COCUBINSKI OLSON REINHART BREWER KARNES DOHERTY



Basketball Basketball Basketball Basketball Basketball Tennis Baseball

Dames Club

(NATIONAL ASSOCIATION OF UNIVERSITY DAMES)



OFFICERS



EMILIA REASONOVER
President

MILLICENT RACHWAL
Secretary



WINIFRED HORTON
Vice President

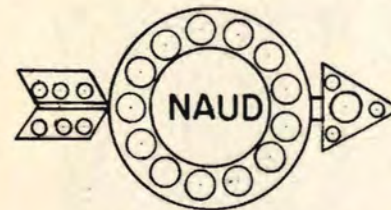
CAROL CHENOT
Treasurer



M E M B E R S



Front row: Mary Elen Wilkinson, Winifred Horton, Doris Ballmer, Wanda Kerley, Rosemary Orr, Peggy Delameter, Geraldine Mayes, Doris McKinley. Second row: Mary Crawford, Blenda Anderson, Lorraine Eutermoser, Millicent Rachwal, Jock Workman, Lois Blass, Marie Bell, Olive Joy Gray, A. Louise Reece. Third row: Tillie Scott, Corina Vorbes, Lillian Herkenhoff, Dorothy Hester, Betty Blankley, Ruth Coffey, Thelma Speare, Betty Ferranti, Pauline Hill, Margaret Daniels. Fourth row: Doris Clippinger, Bobi Ickes, Jeannette Lynch, Bobby Reinhart, Norma Deitz, Emilia Reasonover, Ida Mae Camp, Carol Chenot, Lois Stubbs, Bess Harty. Members not pictured: Albertine Lees, Alaska Brewer, Posey Ely, Nadine Langlinais.



Front row: Susan McRoy, Clara Ruth Colston, Margaret Pickett, Marion Chew. Second row: Francis Senn, Helen Crawford, Bunny Contine, Evelynne McIlravy, Fran Folsom, Letitia Dismant, Hila Sanchez, Helen Hunt, Elizabeth Lassen. Third row: Helen Fleishman, Arlene Beckerdite, Catherine Sullivan, Jean Collins, Lou Law, Jeanne Koch, Leslie Long, Cecilia Husing, Dorothy Long. Fourth row: Ruth Duncan, Sally Smith, Betty Thompson, Clara Aumen, Betty Meahl.

P L E D G E S



Dames Club Sponsors

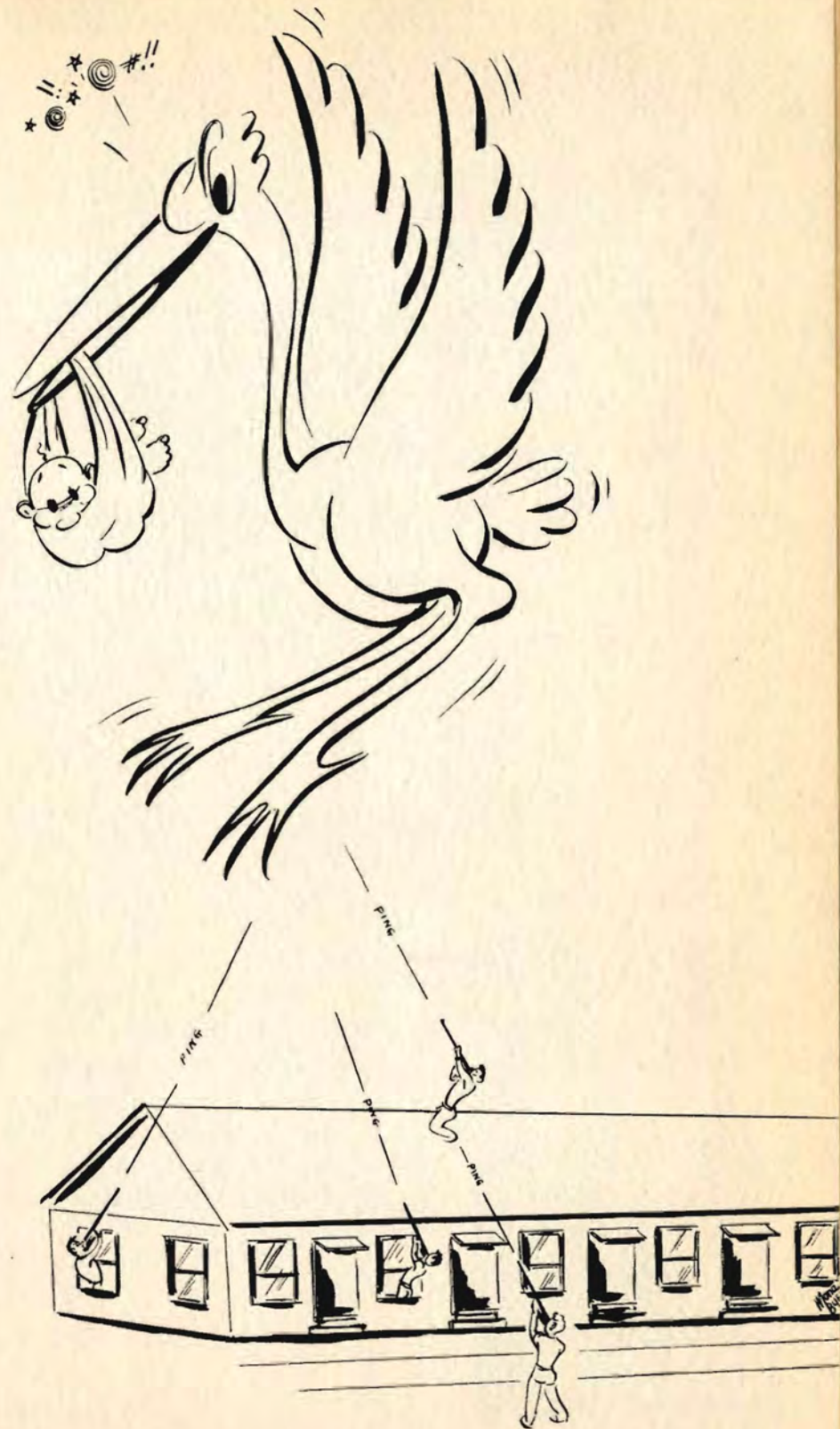


MRS. A. LOUISE REECE



MRS. IDA MAE CAMP

Christmas Party





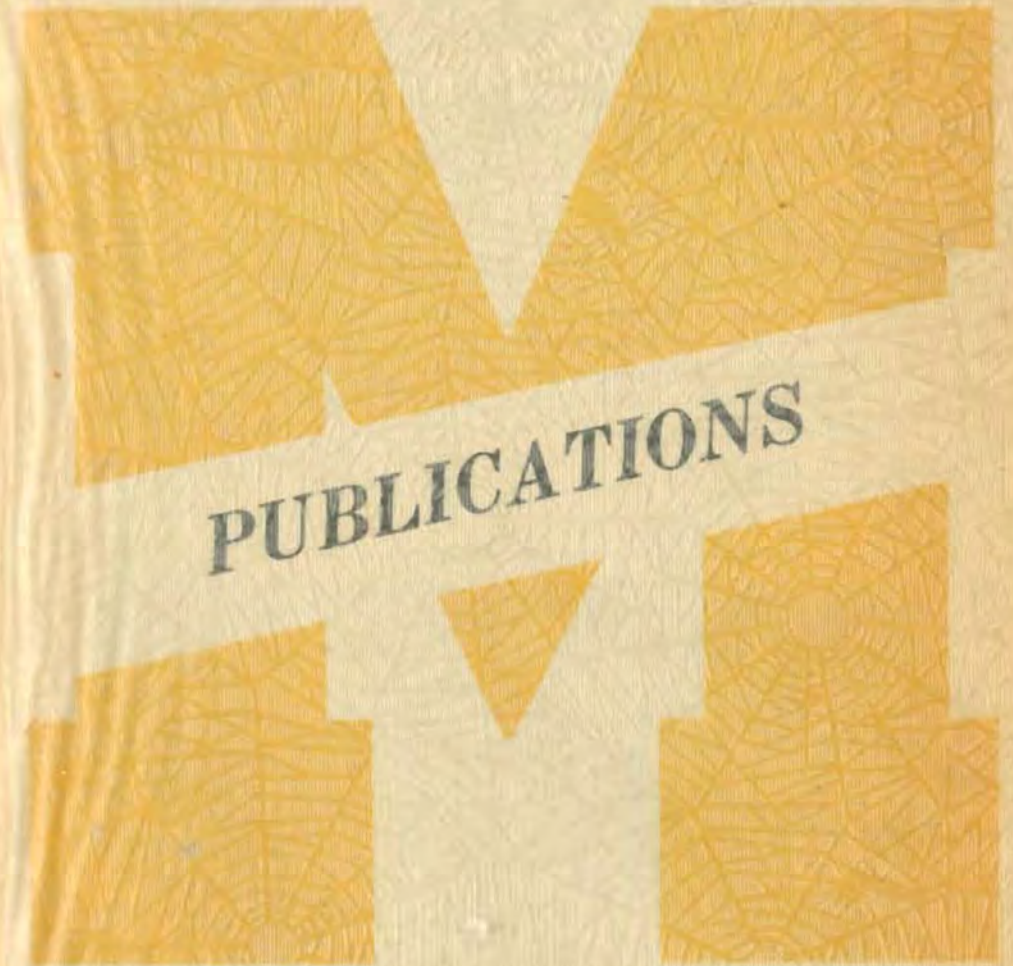
Front row: W. Watson, Stone, Reinhart, McLaughlin, Ballmer.
Middle row: Franks, Rumpf, Bach, Lawyer, Richter, Sykes, Beeler.
Back row: Ballentine, Ellingson, Pickett, Byers, Coffey, Green,
Hansen, Silvertooth, Lees, Contine.

The Lapidary Club



TOM LAWYER
President

This club is of particular interest to embryonic stone-cutters and polishers, and to those interested in that phase of mineralogy known as gemology. Lack of a suitable workshop has limited the activity and stunted the growth of the club, which is potentially the largest most attractive.





GOLD PAN

NEW MEXICO SCHOOL OF MINES
1889
The
Shining Star of Socorro

An Independent Publication of the Students of the
New Mexico School of Mines, Socorro, New Mexico

Member

Associated Collegiate Press

ROGER RICHMAN-ALAN CHEETHAM, Editors

DAVE MATTER, Assistant Editor

JOHN YURONKA, Business Manager

BOB ZWICKY, Assistant Business Manager

MONA BYERS, Cartoonist

Columnists and Contributing Editors: Chester Green, Dick
Chenot, Bob Orr, Kay Lopez, Dick Crial, Bill Carnicom, Bob
Locke, Bill Potashnick.

Sitting: Matter, Cheetham, Mona Byers, Richman.
Standing: Cate, Yuronka, Zwicky, Stoddart.




The Porphyry

JACK W. REINHART, Editor-in-Chief

CECIL V. COFFEY, Associate Editor

THOMAS A. OLSON, Business Manager

MARVIN NAPACK, Assistant Business Manager

JOEL KOBELIN, Photographer

PHILLIP G. STODDART, Photographer

MONA BYERS, Artist

Front row: Olson, Mona Byers, Reinhart.
Back row: Kobelin, Napack, Stoddart, Coffey.



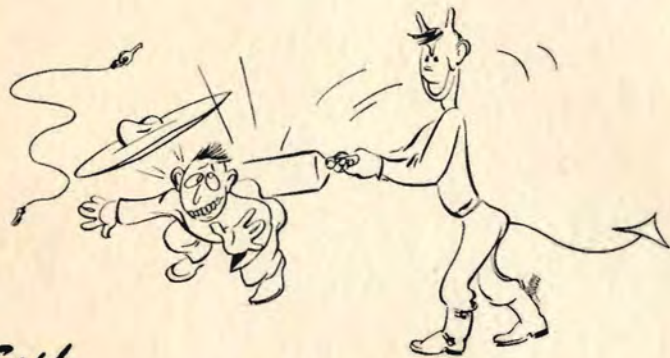


RARE SPECIMEN IN
MUSEUM MINERAL
COLLECTION—
GOLD IN GYPSUM

EVENTS



Arrival



*Soph
Welcome*



*Frosh
Dance*



"M" Day



Thanksgiving



St. Pats

*The
Finished
Product*



The "M" Miracle

During State Fair Week and for the second time within a year, the people of Albuquerque awoke one morning to view the enigma of an "M" occupying the position where the University "U" normally graces one of the foothills east of the city.



BEFORE

Speculation as to the possible implications of the miracle led some to search the scriptures for supernatural explanation of the phenomenon. Old-timers, wise in the recollection and experience of less ordered times, glanced casually at the new aspect of the landscape and were heard to mumble petulantly something about "inmates breaking out of that Socorro asylum again."



AFTER



"M" Day





STUDENTS

SNIPE HUNT

BLESS HIS LIL HEART



LUNCH

*Campus
Life*

..... 9, 10 AND OUT!

BOO!



Tug 'O War





SPORTS

49ers

WAGON WHEELS



BEARDS

49ers

CHARACTERS





49ers



Parade



Green
Eutermoser

Stewart
Orr



Chenot
Plansoen

Waller
McCavitt



Russell
Gill

McLaughlin
Rumpf



Prof. Crawford

Stevens
Rachwal

Bell
Horton



Webb
Karnes

Morrison
Materne



Matter
Crial

Ickes
Harcus





NO LIFE FOR A LADY



REHEARSAL



SUNDAY AFTERNOON





M
I
N
S
T
R
E
L



St. Pats





CAPTIVE



Owl!



BEAUTIES

ATHLETICS

For the second consecutive year, the New Mexico School of Mines is not represented in intercollegiate athletic competition. To many of us who years ago adopted the school as our own, this is a source of great sorrow.

With the cessation of intercollegiate competition, the school lost much of the wonderful spirit for which it was noted and which made its undermanned teams feared throughout the far Southwest.

The Senior Class leaves to the school this unattained objective, viz., that the New Mexico School of Mines shall again take her place in intercollegiate athletics with the limited representation which the small student body and high scholastic standards dictate.

Remember, the essential purpose of such competition is not the glory of victories on the athletic field but rather the development of loyalty, courage, school spirit, pride and initiative in our student body.

B
A
S
K
E
T
B
A
L
L
1
9
4
5
.
4
6



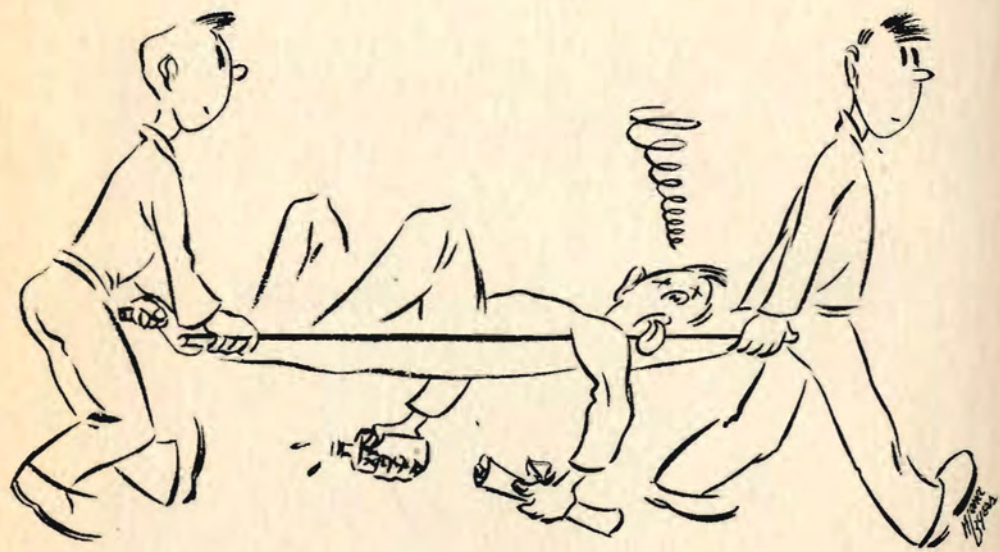
Front row (left to right): Reinhart, Smith, Theriac, Anderson, Blankley. Middle row: McPhail, Briane, Key, Mendoza, McClearin. Back row: Compton (Mgr.), Reynor, Morganthaler, Shaw, Coach Finley.

The last intercollegiate competitive representative of the New Mexico School of Mines was the basketball team of the 1945-46 season. The team was led by a pair of giants, the six foot ten inch post artist, Charlie Reynor, and the seven foot one inch Elmore Morganthaler, known as the "Dizzy Dean of Basketball." Elmo, through a cooperative process, finished in second place in the national individual scoring race. The Miners easily won the New Mexico Conference championship, and played in the National College Tourney at Kansas City.

Record of the 1945-46 basketball team:

Mines		Opponents	
76	AGF, Fort Bliss	24	
39	AAS, Fort Bliss	45	
57	New Mexico A. & M.	49	
48	AAF, Roswell	83	
60	Lagunas, Torreon, Mexico	37	
54	Lagunas, Torreon, Mexico	52	
45	Placio Gome, Torreon, Mexico	26	
41	Lagunas, Torreon, Mexico	54	
46	Dorados, Chihuahua, Mexico	60	
42	Dorados, Chihuahua, Mexico	58	
51	West Texas State	(overtime) 54	
44	AAS, Fort Bliss	60	
48	New Mexico A. & M.	39	
67	AAF, Santa Fe	50	
70	Highlands University	48	
59	Eastern New Mexico Teachers	23	
64	New Mexico Military Institute	25	
61	Belen Merchants	34	
80	Silver City Teachers	41	
82	New Mexico Military Institute	33	
44	Highlands University	41	
45	Atom Bombers	46	
79	Sandia AAF	33	
104	Eastern New Mexico Teachers	36	
61	Sandia AAF	37	
62	Belen Merchants	28	
79	Silver City Teachers	40	





ALUMNI
ASSOCIATION



Class of '23

Remember When---

Main Dorm in 1921



Front row: Sig Sadow (Ski), Ray Speare, George Danley, Sidney Bartlett, Don Wilson, William Clum, John Henderson. Back row: Eugene Foreman, Frank Fuhr, Vic Hawn, Gerald Czechowicz, D. A. R. Thompson, Courtney Collins, George Warner.

Classes of '24 and '25

Left to right: Wallace Jackson, Albert Patterson, Arlo Hatfield, Jerry Ballmer, Shorty Barnard, Jack Fyfe, Joseph Williams, Walter Corley, Stanley Maier, Bill Staley, Ray Brown.



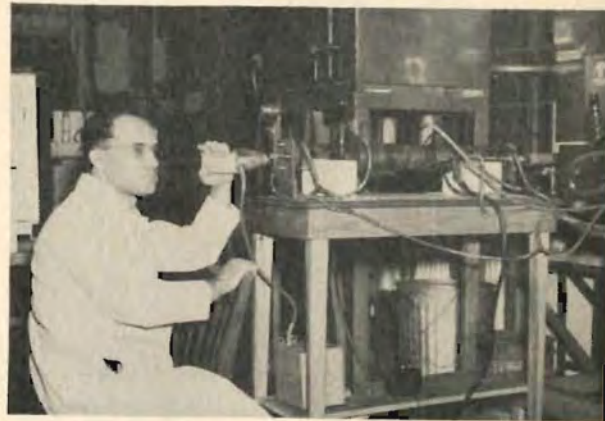


WILLIAM W. STALEY, '25
Professor of Mining
School of Mines
University of Idaho
Moscow, Idaho



ALFRED T. LOVELACE
Laboratory Assistant
Section of Tests & Materials
City of Rochester
Rochester, New York

JOHN FARKAS, JR., '38
Chief Chemist
Permo, Inc.,
Chicago, Illinois



JIM MCKAY, '40 & '41
Sales Engineer, The Dorr Co.,
Toronto, Canada



JUNIOR AND SENIOR CLASSES, NOVEMBER 1946.



ELMORE MORGANTHALER
7' 1" Forward
Second in the nation in individual
scoring. Season of 1945-46.

*The Alumni Association
of the
New Mexico School of Mines*

E. C. ANDERSON, '17, President
G. T. HARLEY, '33, Vice President
MARTIN SPEARE, '31, Secretary

The Alumni Association of the New Mexico School of Mines was organized May 18, 1923. The first officers were: Ward F. Hamm, '23, President; T. B. Everheart, '10, Vice President; Cecil Rowe, '21, Secretary-Treasurer. There were about 65 living members at the time of formal organization.



Now there are about 460 living members of the Alumni Association, widely scattered and in many cases difficult to contact. It was only through the important assistance of Adolph S. Walter, former Professor of Mining and Metallurgy, and William W. Long, Assistant Professor of Mining Engineering, that the compiling of the following membership list was possible.

Association Members

ABERNATHY, ARTHUR H., Apartado 251, Monterrey, N. L., Mexico.
ABEYTA, ANTONIO, ('14), 4615 Locust Street, Philadelphia, Pa.
ADAMS, ALBERT, ('40), Carlsbad, N. M.
AHNEFELDT, RAY C., ('18), Deceased.
ALBEE, DEAN W., ('32), Address unknown.
ALMY, A. LEE, ('29), I. M. & C. Corp., Carlsbad, N. M.
AMIS, CECIL R., ('28), A. S. & R. Co., Angengea, Mex.
AMOS, JOHN P., ('26), Deceased.
ANDERSON, EUGENE C., ('17) Director, Bureau of Mines, Socorro, N. M.
ANDERSON, GAYLE L., Deceased.
ANDERSON, GEORGE T., ('33), Met. Eng., Johns-Manville Products Corp., Lompoc, Calif.
ANDERSON, NOREN V., ('38), San Maracio Mine C. N., Phillipine Is.
ANDRADA, CHARLES J., ('36), c/o Amer. Gas & Electric Serv. Corp., New York City.
ANDREAS, ALEXANDER H., Long Beach, Calif.
ARESCO, SEBASTIAN J., ('37) 14 Spring St., Ansonia, Calif.
ATWOOD, GEORGE E., ('39), I. M. & C. Corp., Carlsbad, N. M.
AUGENTHALER, ROBERT L., ('34), Stan. Oil of Br. Col., Ltd., 700 Lancaster Bldg., Calgary, Alberta.
BABCOCK, JOHN S., ('46), Pioneer Mine, British Columbia.
BACA, FLORENTINO B., ('23), Dallas Center Iowa.
BAER, GEORGE C., ('10), Supt., Cia Minera Pedregal y Anexas, S. A., Taxco, Gro., Mex.
BAKER, DONALD JAMES, ('41), Seattle-Tacoma Shipbuilding Corp., 11th St., S. W., Seattle, Wash.
BAKER, THOMAS C., ('41), 835 W. Main St., Decatur, Ill.
BALDWIN, JAMES C., ('29), Gen. Del., Anchorage, Alaska.
BALLARD, PETER A., ('16), 404 S. Ashland Blvd., Chicago, Ill.
BALLMER, GERALD J., ('25), Supt., Kennecott Copper Corp., Santa Rita, N. M.
BALTOSSER, ROBERT W., ('34), Seismograph Serv. Corp., Tulsa, Okla.
BARNARD, FREDERICK C., ('25), Ezra Kelley Watch & Clock Co., 159 Mt. Pleasant St., New Bedford, Mass.
BARTLETT, SIDNEY S., ('24), A. S. & R. Co., Angengea, Mex.
BATCHELDER, JAMES H., ('09), Mgr., Hotel Alpine, North Woodstock, N. H.
BAYER, KENNETH C., ('38), Carter Oil Co., Tulsa, Okla.
BECKER, DALLAS, ('26), Chemist, Eaton Mfg. Co., Battle Creek, Mich.
BEMIS, HERBERT D., 727 Don Gaspar Ave., Santa Fe, N. M.
BENDA, ROBERT F., ('40), Insp. Eng., Du Pont Co., Cincinnati, Ohio.
BENTLEY, THOMAS H., ('09), Bentley Construction Co., 4022 N. Port Washington Ave., Milwaukee, Wis.
BERENT, ISHAN RUHI, ('33), Keciburlu Sulphur Co., Keciburlu, Turkey.
BERRY, JAMES F., Deceased.
BIRCHBY, ALBERT E., ('23), Construction Service, Inc., 401 Tramway Bldg., Denver, Colo.
BJORN, LEONARD FRANCIS PALMER, ('44), 25 Sterling St., Hartford, Conn.
BLACK, MERZ, ('30), Deceased.
BLACK, RALPH C., ('23), Dillon, Colo.
BLACKBURN, ALEX L., ('18), Deceased.
BLANKLEY, ROY JR., ('48), R. R. 2, Box 242c, Albuquerque, N. M.
BLESSING, ERNEST B., ('27), Sr. Eng., U. S. G. S., Top. Branch, Federal Bldg., Sacramento, Calif.
BODING, CYRIL J., ('35), Deceased.
BOOTH, EDSON R., ('38), Utah Copper Co., Bingham, Utah.

41
BORDEN, JAMES ROY, ('43), Niarada, Mont.
BOSWORTH, ALBERT, ('41), Asst. Mine Eng., Kennecott Copper Corp., Santa Rita, N. M.
BOUCHER, FRANK G., ('29), c/o Humble Oil Co., 159 Humble Bldg., Houston, Texas.
BOYLE, JAMES W., ('34), Mill Supt., Telamayu, Cia., Aramayo de Mines en Bolivie, Casilla No. 674, La Paz, Bolivia.
BRADBURY, CHAS. L., ('22), G. M., Raskob Mining Interests, Inc., Albuquerque, N. M.
BRADY, CHARLES R., ('38), Address unknown.
BRADLEY, WILLIAM T., ('39), 254 LeMoine Ave., Pittsburgh, 16, Pa.
BROWN, CONY T., ('14), Deceased.
BROWN, GLEN F., ('35), U. S. G. S., Box 653, University, Miss.
BROWN, H. LAWRENCE, Deceased.
BROWN, JOHN JOSEPH, ('41), U. S. G. S., Washington, D. C.
BROWN, RAYMOND G., ('25), R. F. C., Room 1219, 200 Bush St., San Francisco, Calif.
BUBENZER, ROBERT E., 613 Edison Ave., South Bend, Ind.
BUCEY, WILLIAM B., Deceased.
BUDZ, EDWARD R., Deceased.
BUNCH, THORNTON C., ('35), Supt., Foundaries, Pearl Harbor Navy Yard, Pearl Harbor, T. H.
BURGESS, FRANK C., ('23), Deceased.
BURKE, HARRY, ('47), Stibnite, Idaho.
BURR, GEORGE H., ('38), 14759 Kittridge St., Van Nuys, Calif.
BUSCH, WILLIAM F., ('33), Hydraulic Eng., State of New Mexico, Lordsburg, N. M.
BUSH, CHARLES H., ('39), Eng. Minerales de Chihuahua, S. A., c/o Sra. L. S. de Mondoza, Creel, Chihuahua, Mex.
BUTLER, WILLIAM F., ('23), Hoover Co., Seattle, Wash.
CAMPREDON, PHILLIP A., ('14), 247 Anita Place, Santa Fe, N. M.
CANAN, RUDOLPH, ('41), Deceased.
CANFIELD, ARTHUR L., ('32), Asst. Mgr., Asbestos Erectors, Inc., Bound Brook, N. J.
CANNON, PETER E., ('21), U. S. Eng. Dept., Roswell, N. M.
CARPENTER, ANDREW H., ('48), 217 Wyoming St., El Paso, Texas.
CASES, PAULINO T., ('41), Bradley Mining Co., Stibnite, Idaho.
CASTILLO, MODESTO D., ('41), United Mining & Milling Co., Socorro, N. M.
CHAPIN, E. LON, ('34), Field Eng., Stanolind Oil & Gas Co., Pampa, Texas.
CHATWIN, HOLLIS E., ('37), 540 W. 5th St., Winnemucca, Nevada.
CHAVEZ, ANTONIO A., ('41), Magdalena, N. M.
CHAVEZ, SALOMON E., ('35), Consolidated Aircraft Co., 2622 Nye St., Los Angeles, Calif.
CHELSON, HARRY C., ('23), Mgr., Research Mining Publications, McGraw-Hill Pub. Co., 330 W. 42nd St., New York City.
CHENOT, GEORGE RICHARD, ('48), R. R. 7, North Canton, Ohio.
CLARK, ERNEST EUGENE, ('42), Phillips Petroleum Co., Bartlesville, Okla.
CLARK, HOWARD P., ('38), Carlsbad, N. M.
CLARK, JAMES DONALD, ('47), Faculty Exchange, Engineering College, Univ. of Oklahoma, Norman, Okla.
CLARK, LEONARD C., ('37), Bradley Mining Co., Stibnite, Idaho.
CLARK, VIVIAN V., Downey, Calif.
CLARK, WILLIAM G., ('47), A. S. & R., Parrall, Mex.
CLIPPINGER, DONN, ('43), Bureau of Mines, Socorro, N. M.
CLOUS, CHARLES W., ('40), Stanolind Oil & Gas Co., Hobbs, N. M.
CLUM, WILLIAM H., ('24), Deceased.
COCKERILL, SAMUEL, ('06) Chief, Div. 56, U. S. Patent Office, Washington, D. C.

51
COCUBINSKY, JOHN, ('48), 243 E. 2nd St., New York City.
COLLINS, COURTNEY, ('24), Rosario, San Jacinto, Honduras.
COLLINS, ODELL, ('32), 830 Arrowhead Ave., San Bernardino, Calif.
COLLINGTON, PAUL N., ('33), Box 931, Kermit, Texas.
COLTER, ARDUS NELSON, ('40), Luscar Coals, Ltd., Luscar, Alberta.
COMEAU, FAYE B., ('32), Donald R. Warren Eng. Co., 403 Latham Square Building, Oakland, Calif.
CONWAY, RALPH F., ('38), 24 Belmont St., Westfield, Mass.
COOK, ALVIN G., ('37), 25 Wellesly Drive, Pleasant Ridge, Mich.
COOK, DONALD M., ('34), 211 Signal Oil Bldg., Los Angeles, Calif.
COOK, HENRY A., ('19), The Detroit Edison Co., Detroit, Mich.
COOPER, ROBERT R., ('23), 5060 E. Colfax, Aurora, Calif.
CORLEY, WALTER J., ('25), County Engineer, King's County, Calif.
COWLES, HAL O., ('26), Address unknown.
CRABTREE, WILLIAM F., ('31), 925 Third Ave., Durango, Colo.
CRONIN, J. GERALD, ('34), Address unknown.
CUMMINS, FRANCIS J., Deceased.
CURTIS, JULIUS E., ('30), Deceased.
CZECHOWICZ, F. GERALD, ('24), Address unknown.
DAILY, HOMER, ('35), Continental Oil Co., Box CC, Hobbs, N. M.
DANLEY, GEORGE E., ('24), Address unknown.
DAVENPORT, JOHN D., ('38), Ohio Mines Corp., Goldpoint, Nevada.
DAVIS, FRANKLIN T., ('41), Magma Copper Co., Superior, Ariz.
DAVIS, WESLEY, ('32), Cons. Geol., 201 Hendrick Bldg., Corpus Christi, Tex.
DEBARATHY, SIDNEY A., ('37), Anaconda Copper Co., Kalispell, Mont.
DELAPLAIN, CHARLES A., ('41), Jr. Top. Eng. U. S. G. S., Washington, D. C.
DENNY, DOUGLAS C., ('38), So. Pac. Signal Service, El Paso, Texas.
DERONNE, NICOLAI C., ('23), Anadir, Siberia (via Nome, Alaska).
DESVAUX, JACK V., ('41), A. S. & R., Magdalena, N. M.
DIETZ, JOHN K., ('48), Lynn St., Harrington Park, N. J.
DIXON, WILLARD N., ('23), Dentist, 513 Plaza Balentine, Santa Fe, N. M.
DOLLIVER, CHARLES M., ('36), United Clay Mines, Trenton, N. J.
DOOLEY, ALBERT B., ('29), Pet. Eng., Belridge Oil Co., McKittrick, Calif.
DORSETT, RAYMOND A., ('37), Address unknown.
DORSEY, THEODORE, ('28), 3700 Whited St., Pittsburgh, Pa.
DOYLE, FRANCIS J., ('29), Ingersoll-Rand Co., 1700 Third Ave., South Birmingham, Ala.
DOYLE, HOWARD P., ('32), Assoc. Civil Eng. T. V. A., Fontana Dam, N. C.
DRULEY, COLLIS E., ('32), Supt., Red Mt. Chromite Co., Seldovia, Alaska.
DUBROW, MEYER H., ('36), Pet. Eng., Continental Oil Co., Big Spring, Tex.
DUESTERBERG, GERHARD G., ('40), U. S. Potash & Chemical Co., Carlsbad, N. M.
DUFFY, JOHN H., ('37, '47), 345-75th St., Brooklyn, 9, N. Y.
DUNN, ROBERT K., ('47), Box 54, Mammoth, Utah.
DURNELL, CLYDE RUSSELL, ('44), Box 82, Olancho, Calif.
DYKERS, MARTIN D., Box 831, Yuma, Ariz.
EDELLEN, ALEXANDER W., A. S. & R. Co., Ave. Madero 55, Apt. 38 Bis., Mexico City, Mex.
EDGERTON, GEORGE C., ('42), Pet. Eng., Humble Oil Co., Box 2025, Tyler, Texas.
EDMONDS, BYRON P., ('39), Carter Oil Co., Box 801, Tulsa, Okla.
EDMONDS, CHARLES G., ('42), Address unknown.
EDWARDS, WALTER E., ('42), 7341 Oxford Ave., Philadelphia, Pa.
EDWINS, PAUL C. VINCENT, The Alma House, Silverton, Colo.
EMERICK, WILLIAM L., ('27), Kennecott Copper Corp., Santa Rita, N. M.
ENTWISTLE, LAWSON P., ('32), Geologist, A. S. & R. Co., Silver City, N. M.

ERICKSON, ERIC G., ('37), Anaconda Copper Co., Butte, Mont.
EVERHEART, THADDEUS B., ('10), 520 Nicholas Ave., Socorro, N. M.
FACKLER, JOHN H., ('38), Eng., Consolidated Aircraft Corp., San Diego, Calif.
FAHRENWALD, ARTHUR W., Dean, School of Mines; Head, departments of Mining and Met., Univ. of Idaho, Moscow, Idaho.
FALOMIR, GUILLERMO J., ('43), Aldama 411, Chihuahua, Chi., Mex.
FARKAS, JOHN, ('38), Chief Chemist, Permo Corp., 6415 N. Ravenswood Ave., Chicago, Ill.
FERRAZANO, VINCENT J., ('47), 459 Mercury St., Butte, Mont.
FISHER, FRED A., ('30), Address unknown.
FISHER, LAURENCE E., ('37), Address unknown.
FITCH, JAMES N., ('33), c/o U. S. G. S., Albuquerque, N. M.
FLEISHER, DONALD E., Deceased.
FLEISHER, GEORGE G., ('43), Box 286, Coalinga, Calif.
FLEISSNER, L. E., ('12), City Clerk, Park Ridge, Ill.
FOELL, FREDERICK W., ('35), Stanolind Oil & Gas Co., Odessa, Texas.
FORD, JAMES T., ('29), R. R. 2, Broadalin, N. Y.
FOREMAN, EUGENE E., ('24), Deceased.
FUHR, FRANK B., ('24), Supt., C. M. & S. Co., Ltd., Fernie, B. C.
FUHRMAN, CARL F., ('30), Address unknown.
FULMER, WALTER J., ('40), U. S. Smelting & Refining Co., Vanadium, N. M.
FYFFE, JACK E., ('25), Deceased.
GARDNER, THOMAS M., ('23), Deceased.
GARRETT, CHARLES R., ('32, '33), Spokane-Idaho Mining Co., Star Route, Kellogg, Idaho.
GARRETT, SAMUEL K., ('35), Spokane-Idaho Mining Co., Star Route, Kellogg, Idaho.
GENG, GEE H., ('23), Nanking Arsenal, Nanking, Kiangsu, China.
GEORGE, FRANK C., ('39), George Coal Co., Gallup, N. M.
GERTZ, CARL F., ('23), New Jersey Zinc Co., Palmerton, Pa.
GIBSON, WARD, ('40), A. V. Plant, A. S. & R. Co., Leadville, Colo.
GIRARD, JOSEPH H., ('23), Gen. Del., Phoenix, Ariz.
GLEASON, HART C., ('39), Stanolind Oil & Gas Co., Tulsa, Okla.
GLENN, ALBERT F., ('41), Bethlehem Steel Co., Bethlehem, Pa.
GODELL, John J., ('40), Magnolia Petroleum Co., 2850 No. Haskell St., Dallas, Texas.
GOFF, ERNEST ABNER, ('45), Virginia, Minn.
GOFORTH, LESLIE K., ('26), Eng. and Land Surveyor, San Lorenzo, N. M.
GONCALVES, JULIO S., ('29), Eng., Directoria de Fructicultura, Ministerio da Agricultura, Rio de Janeiro, Brazil.
GOODJOHN, HARRY T., Chief Chemist, International Smelting & Refining Co., Tooele, Utah.
GOODWIN, WILLIAM P., ('09), U. S. Gov't., 705 E. Franklin St., Richmond, Va.
GORDON, JOHN D., ('40), Magnolia Petroleum Co., Dallas, Texas.
GOREN, FRED, ('42), Mina, Nevada.
GOUDGE, ROBERT F., ('41), 794 Harrison Ave., Beloit, Wis.
GRAY, BUNDY M., Deceased.
HILLYER, SHALER G., ('29), Lamar, Colorado.
HINES, RUE N., ('07), Deceased.
HIRSCHFELD, G. H., ('41), Drawer, Hobbs, N. M.
HOBART, E. NORRIS, ('10), Deceased.
HODSON, GLENN KEITH, ('44), R. R. 5, Stringtown Rd., Evansville, Ind.
HOGANSON, JOSEPH J., ('42), Republic Steel Corp., Mineville, N. Y.
HOLMES, DONALD, ('39), Deceased.
HOLZWORTH, ARTHUR C., ('34), Deceased.
GRAY, RALPH L., ('39), 724 E. Harvey St., Ft. Worth, Texas.

GREEN, RICHARD L., ('42), Prod. Eng., The California Co., Ferriday, La.
GREENE, GERALD U., ('23), Professor of Metallurgy, Fenn College, Cleveland, Ohio.
GREER, ALBERT R., ('43), Box 337, Aztec, N. M.
GRIFFITH, ROBERT M., ('42), 207 N. Atlantic Dr., Peninsula Sta., Daytona Beach, Fla.
GRISWOLD, GILBERT R., ('33), Constr. Eng., 1500 Las Lomas Road, Albuquerque, N. M.
GUNTER, JOHN B., ('22), Deceased.
HAGIE, EDWARD G., ('42), A. S. & R. Co., Santa Barbara, Chi., Mex.
HAGIE, WILLIAM C., ('33), Agent, Prudential Insurance Co., Milwaukee, Wis.
HAMM, WARD F., ('23), Benguet Cons. Mining Co., Antamok, P. I.
HAMMACK, HUGH M., ('23), Deceased.
HAMMEL, FRANCIS U., ('23), 1566 W. 139th St., Gardena, Calif.
HAMMEL, EDWIN C., ('17), Deceased.
HARBAN, ROBERT C., ('42), A. S. & R. Co., San Luis Potosi, S. L. P., Mex.
HARLEY, G. TOWNSEND, ('38), Mgr., I. M. & C. Corp., Box 71, Carlsbad, N. M.
HARRIS, K. V., ('28), Kennecott Copper Corp., Santa Rita, N. M.
HARRISON, WILLIAM H., ('27), Supt., Aluminum Ore Co., Rosiclare, Ill.
HARTWELL, JOHN H., ('39), c/o John S. Babcock, Pioneer Mine, Br. Col.
HARTWELL, LESLIE E., ('37), Chemist, Miami Copper Co., Miami, Ariz.
HATFIELD, ARLO C., ('25), Supt., Gulf Oil Co., Box 751, Borger, Texas.
HAWES, LORIN L., ('25), Eng., Braden Copper Co., Rancagua, Chile.
HAYES, QUIN, ('41), Eng., Empire Zinc Co., Hanover, N. M.
HEACOX, ROLAND E., ('29), Eng., Barker & Wheeler, 36 State St., Albany, N. Y.
HEAD, JACK L., ('35), U. S. Bdry. Comm., Washington, D. C.
HEILMAN, HAROLD E., ('34), Contractor, 4954 N. 37th St., Milwaukee, Wis.
HELMS, PHILLIP C., ('41), Deceased.
HELPRIN, SYDNEY E., ('28), Geologist, Frick Lab., Roslyn, N. Y.
HENDERSHOT, FREDERICK V., ('38), Address unknown.
HENNING, WILLIAM E., Knoxville, Iowa.
HERKENHOFF, EARL C., ('36, '37), Met. Eng., American Cyanamid Co., 1937 W. Main St., Stamford, Conn.
HERKENHOFF, GORDON E., ('28), Cons. Eng., 237 Anita Pl., Santa Fe, N. M.
HERKENHOFF, WALTER E., ('35), Kennecott Copper Corp., Santa Rita, N. M.
HESSEL, FARNHAM L., ('42), Address unknown, (San Diego, Calif.).
HICKMAN, FRANCIS W., ('36), Fort Lewis, Colo.
HIGDON, CHARLES E., ('28), Geologist, A. S. & R. Co., Madero 55, Apartado 38 Bis., Mexico, D. F.
HILL, THOMAS E., ('34), Assoc. Met., U. S. Bur. Mines, Boulder City, Nev.
HILL, WILLIAM C., Box 1012, Fairbanks, Alaska.
Montreal, P. Q., Canada.
HOLZWORTH, AUGUST P., ('38), Eng., I. M. & C. Co., Carlsbad, N. M.
HOMME, CARL J., ('00), 3312 N. 37th St., Milwaukee, Wis.
HOMME, VERNON E., ('32), Assoc. Met., U. S. Bur. Mines, Boulder City, Nev.
HOMME, WILLIAM E., 203 Poplar Ave., Brea, Calif.
HON, HECTOR J., Asst. Eng., Const. Dept., Erie R. R. Co., Republic Bldg., Cleveland, Ohio.
HON, RICHARD J., ('29), Asst. Eng., Calif. Div. of Highways, Stockton, Calif.
HOI, VICTOR J., ('24), Deceased.
HORTON, JOSEPH S., ('48), 2554 W. Fitch Ave., Chicago, Ill.
HOY, GEORGE ROBERT, ('42), Farmington, N. M.
HUBBARD, HARVEY J., ('06), Deceased.
HULT, W. A. E., Pers. Dir., Phelps-Dodge Corp., Morenci, Ariz.

HUNT, WILLIAM J., ('38), Phelps-Dodge Corp., Bisbee, Ariz.
HUNTER, JOHN A., ('03), Deceased.
ICKES, CLYDE W., ('48), Berlin, Penna.
INGUNZA, PABLO, Morococha, Peru.
IRVIN, GERALD W., ('38, '39), Box 918, Mesa, Ariz.
IRVIN, TOM B., Deceased.
IRWIN, WILLIAM PORTER, ('44) 1226 S. 5th St., Springfield, Ill.
JACKSON, WALLACE, ('25), Shell Oil Co., Shell Bldg., San Francisco, Calif.
JAMES, ROBERT C., ('38), United Clay Mines, Trenton, N. J.
JETER, ROY C., ('45), Box 195, Jal, I. M.
JEWEL, RICHARD L. ('38), Box 403, Anaheim, Calif.
JOHNSON, A. C., ('23), Reno, Nev.
JOHNSON, FRANCIS A., ('39), 727 Perry St., Vincennes, Ind.
JOHNSON, FRANK A., ('13), Deceased.
JOHNSTON, RALPH W., ('23), Empire Oil & Refining Co., Tallant, Okla.
JONES, DOUGLAS EMITT, ('44), 3231 E. 5th Pl., Tulsa, Okla.
JONES, OWEN W., ('42), McCutchin Drilling Co., Levelland, Texas.
KASEVNIK, JOSEPH J., ('36), Address unknown.
KAUFMAN, RICHARD L., ('36), Address unknown.
KELLY, JOHN M., ('36), Roswell, N. M.
KELLY, LEON W., ('17), Supt. W. J. Rainey, Inc., Allison, Penna.
KENNEDY, JOHN P., R. R. A. Oak Hill Farm, Box 40, Natchez, Miss.
KETTEL, FERN L., ('36), Asst. Mgr., Cia Minera de Nicaragua, Managua, Nicaragua.
KING, JAY T., ('36), Eng., Anaconda Copper Co., Butte, Mont.
KLEINER, JOHN L., Box 384, Gallup, N. M.
KOPAZ, JOSEPH P., ('40), 1083 Longfellow Ave., New York City.
KORYCINSKI, VICTOR, ('41), Student, Texas Sch. of Mines, El Paso, Texas.
KRAMER, JAMES J., ('34), Gamble Store, Cuba City, Wis.
KRUG, FREDERICK, Gen. Mgr., Montreal Engr. Co., Ltd., 244 St. James St., W.,
LAKE, BRUCE FREDERICK, ('40), 150 E. Frederick St., Binghamton, N. Y.
LALONDE, CLARENCE M., ('34), Phillips Pet. Co., Bartlesville, Okla.
LANDON, BUDD A., ('28), International Harvester Co., Chicago, Ill.
LANKFORD, K. D., ('42), Field Eng., M. W. Kellogg Co., Sterlington, La.
LATVALA, WOODROW J., ('48), Nashwauk, Minn.
LEACH, STEVEN J., ('33), Assoc. Eng., Humble Oil & Refining Co., Box 1600, Mid-
land, Texas.
LEACH, WILLIAM J., ('35), Des. & Constr. Eng., Austin Co., M & M Bldg., Houston,
Texas.
LECKLIDER, F. G., ('23), Southwest Metals Co., Humbolt, Ariz.
LEE, HARRY M. J., ('38), 727 N. Alameda St., Los Angeles 12, Calif.
LEE, REGINALD G., ('38), Bauer, Stockton, Utah.
LEES, ARTHUR S., ('48), 9302 Sproat Ave., Oak Lawn, Ill.
LESHER, CHARLES W., ('34), Hopewell Junction, N. Y.
LINCOLN, FRANCIS C., ('04), Prof. of Mining, South Dakota School of Mines, Rapid
City, South Dakota.
LIND, CHARLES ('36), Texas Oil Co., Port Arthur, Texas.
LONG, WILLIAM W., ('26), Prof. of Mining, N. M. S. M., Socorro, N. M.
LOVELACE, ALFRED T., Testing Lab., Bldg. & Hwy. Mat., Rochester, N. Y.
LOWE, R. H., ('31), Field Eng., American Cyanamid Co., 30 Rockefeller Plaza, New
York City.
LUNA, JESUS M., ('48), Mt. Carmel Ave., Socorro, N. M.
LYDON, THOMAS E., ('36), Golden Anchor Mining Co., French Creek, Idaho.
LYON, CALVIN L., Deceased.
LYONS, HORACE T., ('12), Deceased.

LYTLE, JACK Y., ('37), Deceased.
MACEY, WILLIAM B., ('42), Room 312, Carper Bldg., Artesia, N. M.
MADILL, KEITH B., ('36), Address unknown.
MAEDER, SOLOMON N., ('41), Eng. Aide, Panama Canal Comm., Box 346, Coco-
li, C. Z.
MAHONEY, EDWARD A., ('48), 340 N. Market St., Wichita, Kan.
MAIER, JOHN A., ('33), Address unknown.
MALLERY, JAMES H., ('31), Mine Supt., Navajo Fluorspar Mines, Grants, N. M.
MALOIT, FRANK, ('14), Supt., Eagle Mines, Empire Zinc Co., Gilman, Colo.
MALCIT, JAMES P., ('35), 4521 Keystone Rd., Houston, Texas.
MAREK, HUGO, ('23), U. S. Coast & Geodetic Survey, Seattle, Wash.
MARSHALL, LAWRENCE K., ('47), Box 52, Gabbs, Nev.
MARTIN, JOHN S., ('27), Murphy, Calif.
MARTIN, JOHN W., ('26), 1206 S. 10th Ave., Arcadia, Calif.
MARTIN, WILLIAM D., ('37), Eng., Mene Grande Oil Co., Maracaibo, Venezuela.
MATSON, JOSEPH T., Consulting Eng., Santa Fe, N. M.
MATTER, JOHN M., ('35), 12053 Lake Ave., Lakewood, Ohio.
MATHEWS, JOHN N., ('46), Graduate School, Univ. of Missouri, 9 "M" St., Stadium
Court, Columbia, Mo.
MATTHAEI, RICHARD I., ('41), Banner Mine Co., Lordsburg, N. M.
MATUSZESKI, RICHARD A., ('44), N. M. Bur. of Mines, Socorro, N. M.
MAYER, STANLEY A., ('25), Patino, Bolivia.
McCAVITT, FRANCIS J., ('48), 6818 16th Ave., N. E., Seattle 5, Wash.
McCRODEN, THOMAS J., 1112 E. Roma Ave., Albuquerque, N. M.
McCROSKEY, BYRON B., ('40), Lea County Operators Comm., Hobbs, N. M.
McDONALD, THOMAS A., ('31), 5464 Beaumont, Ave., LaJolla, Calif.
McGRATH, PHILLIP T., ('38), Pet. Eng., Texas Co., Box 1221, Pampa, Texas.
McINTYRE, E. STEELE, ('41), Combined Metals Reduction Co., Pioche, Nev.
McKAY, JIM B., ('40, '41), Sales Eng., The Dorr Co., Toronto, Canada.
McMURRAY, ARTHUR B., ('30), Chemist, National Standard Co., Los Angeles.
MEDRANO, FERNANDO, ('48), 244 Porfirio Diaz, El Paso, Texas.
MEIER, WALTER A., ('32), Deceased.
MELENDEZ, CESAR M., ('29), 137 Flores, Bananquilla, Columbia.
MILBORN, JOHN D., ('34), Exploit. Eng., Shell Oil Co., Houston, Texas.
MILLER, ADAM, ('42), Address unknown.
MILLER, DANIEL M., ('09), Mine Operator, Lake Valley, N. M.
MILLER, THURMAN E., ('33), Ass't. Struct. Eng., Atkinson & Pollock, Contractors,
Port Hueneme, Calif.
MONTGOMERY, ROBERT, ('41), Eng., U. S. G. S., Brewster, N. Y.
MOORE, FREDERICK G., ('39), Deceased.
MORGAN, EARLE G., ('11), 4809 Chevy Chase Drive, Chevy Chase, Md.
MORRIS, ABE P., ('23), Asst. Supt., Kennecott Copper Co., Santa Rita, N. M.
MORRIS, HENRY J., ('33), Phelps-Dodge Corp., Bisbee, Ariz.
MORTON, ERLE D., ('09), 4110 E. Cooper St., Tucson, Ariz.
MORTON, PAUL, ('42), Supt., Ames Mining Co., Fayette, West Va.
MUDGETT, PHILIP B., ('30), 1212 Lake St., Salt Lake City, Utah.
MULLANY, JOHN T., ('34), Attorney, 710 N. Montana St., Butte, Mont.
MURPHY, HOWARD F., ('31), Address unknown.
MURRAY, GEORGE, ('32), Supt., Newmont Expl., Ltd., Rm. 232, Nat'l Bank Bldg.,
Salt Lake City, Utah.
MYATT, JOHN P., ('28), Phy. & Surg., 6032 Whittier Blvd., Montebello Park, Los
Angeles, Calif.
MURUSKY, ALDA, ('47), N. M. State Teachers College, Silver City, N. M.
NAEVE, ALBERT ENNIS, ('42), Address unknown.
NAGLE, LAWRENCE E., ('38), 1221 DuBarry Lane, Houston 8, Texas.

41
NAGLE, RODNEY B., ('40), Deceased.
NASR, SAMI N., ('38), Field Geologist, I. P. C., Ltd., Haifa, Palestine.
NEUHAUS, CHARLES E., ('28), Prod. Fm., Shell Oil Co., Ventura, Calif.
NEWTON, ELLSWORTH H., Publisher, North Conway, N. H.
NORRIE, HAROLD R., ('48), Amos, Quebec, Can.
NORTON, HENRY P., ('36), Anderson-Prichard Oil Corp., Hobbs, N. M.
O'BOYLE, FRANCIS J., Deceased.
O'BOYLE, MARTIN J., ('14) Supt., Oat Hill Mine, Middletown, Lake Co., Calif.
ODQUIST, RONALD E., ('30), Deceased
OFFEN, ALVEN, ('95), Deceased.
OLIVER, CARL A., ('41), Box 584, Socorro, N. M.
OLSEN, HAROLD, ('29), Mgr. & Pharmacist, Hilton Pharmacy, Socorro, N. M.
OLSON, MARK O., ('42), 632 Oil & Gas Bldg., Houston, Texas.
OLSON, THOMAS A., ('48), 275 Central Park West, New York City.
ORR, CLEMENT W., ('26), Box 312, Morenci, Ariz.
PAISLEY, WALTER W., ('39), Box 23, Oro Grande, Calif.
PARENT, DOUGLAS, ('34), Val d'Or, Quebec, Can.
PANTESS, ANDREW J., ('31), Box 586, Nederland, Texas.
PARK, CHARLES F., ('26), Geology Dept., Stanford University, Calif.
PARKS, NEWTON F., ('39), Address unknown.
PASHLEY, A. Glenn, ('38), 1309 Noyes St., Utica, N. Y.
PATRIGO, WILLIAM J., ('33), 1958 Barrows St., Toledo, Ohio.
PATTERSON, ALBERT H., ('25), Hwy. Eng., U. S. P. R. A., Rm. 254, New Custom House, Denver, Colo.
PERKINS, EDWARD C., ('39), Box 761, Boulder City, Nev.
PERUSEK, CYRIL J., ('42), 1005 W. Wall St., Midland, Texas.
PETERSON, NELS P., ('20), U. S. G. S., Box 4356, University Station, Tucson, Ariz.
PETTIT, ROBERT F., ('35), Compania Minera de Alarcon, Taxco, Guerrero, Mex.
PICKARD, FRANK C., ('37), Mine Supt., Tsumeb Mines Ltd., Tsumeb, S. W. Afr.
PINKSTON, GLADWYN E., ('37), Address unknown.
PIPPIN, GILBERT I., ('27), 56 Ocean View Rd., Cape Elizabeth, Me.
PLANSOEN, HECTOR L., ('48), R. 2, Cornelius, Oregon.
POPE, ALFRED L., ('29), Blaw-Knox Co., Box 191, Blawnox, Pa.
POSEY, THOMAS L., ('27), Magdalena, N. M.
POWELL, W. CARLOS, ('27), 126 N. Castillo Ave., Santa Fe, N. M.
PRICE, FRANKLIN L. C., ('43), Address unknown (Canada).
PURVIS, DONALD R., ('39), A. S. & R. Co., Vanadium, N. M.
PYLE, W. ROBERT, ('38), Address unknown.
RACKMIL, LEONARD H., ('35), Deceased.
REED, F. DALE, ('33), Chief Eng., Acme Gas Lift Co., 1423 Maury St., Houston, Texas.
REICH, THEOROR A., ('25), 8 Jordon Ave., San Francisco, Calif.
REINHART, JACK W., ('48), 414 W. Monroe St., Kokomo, Ind.
RICHARDS, CLARENCE C., ('39), Serv. Eng., Curtiss-Wright Corp., Buffalo, N. Y.
RICHMOND, RCLAND M., ('37), Div. Supt., The Fresnillo Co., Fresnillo, Zac., Mex.
RIDDELL, DELL F., ('05), Address unknown.
RIDDELL, DONALD H., ('37), Ingersol-Rand, 11 Broadway, New York City
RIDDELL, WALTER, ('31), Supt. & Mgr. Dir., Sec.-Treas., Geophysics Exploration Ltd., Kirtland Lake, Ontario, Can.
RINGLUND, SOREN, ('12), Deceased.
ROBBINS, ORLANDO D., ('12), O. D. Robbins Co., Engrs., 415 S. 2nd St., Louisville, Ky.
ROBERTS, JOHN A., ('33), Sr. Insp., Tunnel Div., Penna. Turnpike Comm., Shippensburg, Pa.

43
ROBINSON, FRANK, ('29), Santa Rosa, N. M.
RODDY, DANIEL A., ('34), S. Edith St., Albuquerque, N. M.
RODENBERG, CLARKE E., ('34), Fairbanks Morsq & Co., 217 S. 8th St., St. Louis, Mo.
RODGERS, HAROLD E., ('26), Deceased.
ROHRER, S. LEWIS, ('32), Address unknown.
ROOT, DONALD C., ('37), Met. Eng., U. S. Bur. of Mines, 544 E. 1st St., S. Salt Lake, City, Utah.
ROUNDS, PAUL L., ('26), Deceased.
ROWE, CECIL, ('21), Deceased.
RUNYAN, ROGER M., ('34), 470 W. Hanover St., Trenton, N. J.
RUSSEL, MARK T., Deceased.
RUSSELL, ROY G., ('48), 1304 Emerson Ave., Monroe, La.
RYAN, IRENE ESTHER, ('40), Assoc. Airways Eng., Const. Unit, C. A. A., Anchorage, Alaska.
RYAN, JOHN EDWARD, ('40), Central Power & Heating Plant, Fort Richardson, Alaska.
RYAN, J. PATRICK, ('31), Sarnia, Ontario, Canada.
RYAN, VINCENT M., ('31), Boorlamaque, Quebec, Canada.
SACKETT, IRVIN L., ('41), Taos, N. M.
SADOW, SIGMUND J., ('24), 57-22 161st St., Flushing, L. I., N. Y.
SALMON, EVAN, ('38), Sr. Dist. Pet. Eng., Standard-Vacuum Oil Co., Soengei Gerong, Palembang, Sumatra, Dutch East Indies.
SALZMANN, JOHN A., ('35), Sales & Serv. Eng., Chicago Pneumatic Tool Co., 119 W. 2nd St., Salt Lake City, Utah.
SANCHEZ, JULIUS, ('17), Socorro, N. M.
SANCHEZ, MANUEL A., ('17), Salmon Bldg., Santa Fe, N. M.
SAUNDERS, GUY, ('35), Box 574, Midland, Texas.
SEVILLER, CHARLES W., ('36), Geol. Dept., Texas Pet. Co., Bogota, Colombia.
SAWYER, NOAH GUS, ('41), Address unknown.
SCHAAL, RICHARD G., ('38), Serv. Eng., Ingersoll-Rand Co., 331 Michigan St., Duluth, Minn.
SCHAFFNER, DANIEL F., ('29), A. S. & R. Co., Bonanza, Nicaragua.
SCHELL, ROBERT L., ('39) Eng., Republic Mining & Mfg. Co., Bauxite, Ark.
SCHNORR, DOUGLAS P., ('32), 205 Wyoming Ave., Buffalo, N. Y.
SEIDEMAN, RALPH J., ('36), Eng. Dept., Anaconda Copper Co., Henessey Bldg., Butte, Mont.
SEYFFERT, RICARDO J., ('41), Eng., A. S. & R. Co., Apt. 3 Bis., Chihuahua, Chi., Mexico.
SHAFFER, E. L., ('47), 512 E. Scharbower St., Hobbs, N. M.
SHAFFER, ROBERT E., ('38), Mech. Eng. Dept., Iowa State College, Ames, Ia.
SHERIDAN, M. JACK, ('38), Address unknown.
SHIPPS, ACIL C., ('23), Asst. Eng., Mt. Hawley Rd., Peoria, Ill.
SIEBENTHAL, MOTTIER, ('45), Nashwauk, Minn.
SIEGAL, EDWARD W., ('39), Address unknown.
SILVA, JAIME, ('31), Eng., Atkinson-Pollock Co., Port Hueneme, Calif.
SIMPSON, THOMAS, ('23), Proprietor, Thomas & Chaley, Hidalgo, Mexico.
SISNEY, EVERETT W., ('34), Geol., Cities Service Oil Co., Box 4577, Oklahoma City, Okla.
SKEEHAN, STANLEY S., ('35), Asst. Civil Eng., U. S. Eng. Off., 1204½ F St., Marysville, Calif.
SKELON, THOMAS, Deceased.
SMITH, DAVID H., ('43), 300 W. McCaffey St., Roswell, N. M.
SMITH, ELWYN RANDOLPH, ('42), 14201 Friar St., Van Nuys, Calif.

SMITH, J. AVERY, ('13), Office of Weights & Measures, 501 New High St., Los Angeles, Calif.
SMITH, OLIVER R., ('02), 1301 1st St., Red Bluff, Calif.
SMITH, WILLARD C., ('31), Cons. Eng., Box 561, Silver City, N. M.
SORENSEN, PAUL M., ('26), Gen. Mgr., Hirst-Chicago Mining Co., Kimshan Cove, Alaska.
SPANNAGEL, TRUMAN G., ('30), U. S. Bur. of Recl., Lamar, Colo.
SPEARE, RAYMOND D., ('24), 5590 Etzel Ave., St. Louis 12, Mo.
SPEARE, MARTIN, ('31), N. M. S. M., Socorro, N. M.
STALEY, CHARLES G., ('37), Oil Proration Office, Hobbs, N. M.
STALEY, WILLIAM W., ('25), Prof. of Mining, Univ. of Idaho, Moscow, Idaho.
STAUDER, CLYDE E., ('39), Tucson, Ariz.
STECH, HOWARD, ('20), Indiana State Highway Comm., State House Annex, Indianapolis, Ind.
STEGER, PAUL A., ('41), 505 Ojinaga, Chihuahua, Chi., Mexico.
STEIN, PAUL, ('11), Deceased.
STEPHENSON, KERMIT V., ('34), Emerado Pett. Corp., Box 285, Seminole, Texas.
STEVENS, FRANK H., ('29), Deceased.
STEVENS, LANHAM E., ('40), Phelps-Dodge Corp., Box 2194, Warren, Ariz.
STEWART, NED, ('48), Box 882, Delano, Calif.
STITZER, JOHN H., ('41), Goodman Conveyor Co., Chicago, Ill.
STOCKING, GEORGE W., ('32), Hutchinson, Minn.
STEELE, LOUIS E., ('29), Calif. Div. of Hwys., 1233 Ethel St., Glendale.
STONEROOK, WILLIAM H., ('30), Deceased.
STRAND, KARL A., ('12), Chief Mine Eng., Kennecott Copper Corp., Santa Rita, N. M.
STURGIS, HENRY F., ('40), Res. Eng., Stanolind Oil Co., Box 591, Tulsa, Okla.
SUCHMAN, JOEL M., ('35), Carl B. King Drilling Co., Eunice, N. M.
SUMNER, WILLIAM R., ('35), Chief Chemist, Peru Mining Co., Deming, N. M.
SUPPAN, LEO, ('96), Deceased.
SURBER, N. COURTNEY, ('38), Geol. Dept., Carter Oil Co., Box 2104, Billings, Mont.
SWEDLUND, WALLACE, ('31), Address unknown.
SZEWCZAK, STANLEY J., ('41), Address unknown.
SZYNKLEWSKI, ARCADY M., ('37), A. S. & R. Co., Leadville, Colo.
TARBET, W. A., ('31), 412 Grand Ave., Artesia, N. M.
TENNIS, EDGAR WAYNE, ('35), Mine Fm., General Chemical Co., Salida, Colo.
TERRY, JOHN M., ('32), Box 1041, Seminole, Okla.
TERRY, OWEN W., ('31), 2713 Kipling Ave., Minneapolis, Minn.
THOMPSON, DAVID A. R., ('24), Tech. Rep., Atlas Powder Co., Hamilton National Bldg., Knoxville, Tenn.
THORESEN, THEODORE, ('33), Chief Mine Eng., Sociedan Empresa de Estano de Araca, Viloco, Bolivia.
THURMOND, SEYMOUR S., ('39), Hot Springs, N. M.
THURSTON, STEVEN R., ('40), 260 Wayland St., Los Angeles, Calif.
TOWNSEND, KENNETH R., ('36), Aztec, N. M.
TROSSELLO, MINOTE P., ('26), Canoncio, N. M.
TUFTS, JOHN M., ('39), c/o Arnold Hayter, 5 Avenida Sur. 20, Guatemala.
TUOMI, WILLIAM C., ('41), Chief Eng., DeNite Mines, Ltd., Timmons, Ontario.
TURNER, GEORGE E., ('33), Bureau of Agricultural Econ., Amarillo, Texas.
TUSCHKA, OTTO J., ('96), Globe, Ariz.
UPDYKE, ROBERT D., ('30), Div. Cost Eng., Richfield Oil Corp., Elk Hills, Calif.
VALENTINE, RICHARD K., ('32), Postmaster, Rome, Pa.
VAN DE WATER, J. C., ('29), Box 100, Miami, Ariz.
VAN SANT, JOEL N., ('33), Eng., St. Louis, Rocky Mt., & Pac. Coal Co., Raton, N. M.

VENTURINI, JULIO, ('47), 2950 E. Belgrave Ave., Huntington Park, Calif.
VIJIL, JOHN I., Deceased.
WALKER, ALBERT G., ('34), Box 6127, Metropolitan Sta., Los Angeles, Calif.
WALKER, GLEN B., ('36), Geol. Dept., Gulf Refining Co., 322 Lumpkin Bldg., Mattoon, Ill.
WALKER, STANLEY S., ('29), Road Eng., Ftt. Totten Indian Agency, Ft. Totten, No. Dak.
WALTER, JOHN L., ('31, '32), Eng. & Supt., The Earl Walker Co., Inc., Sullivan, Ill.
WALTER, RUDOLPH J., ('26), Chief, U. S. Bur. Recl., Ellis, Kan.
WARD, CHARLES, ('29), City Eng., Humbolt, Kan.
WARNER, GEORGE A., ('24), Supt., Zuni Milling Co., Los Lunas, N. M.
WATSON, HAROLD A., ('26), 928 La Font Place, Albuquerque, N. M.
WATSON, MARSH S., ('46), Texas Petroleum Co., Apartado 267, Caracas, Venezuela.
WATSON, ROBERT P., ('35), Ass't. Hwy. Eng., State of Calif., 1200 N. Center St., Stockton, Calif.
WAYLETT, WILLIAM J., ('40), R. R. 2, Watervliet, N. Y.
WELD, LAURENCE P., ('12), Address unknown.
WELLS, GORDON H., ('31)1, Pet. Eng., Pacific Western Oil Co., 1060 Subway Terminal Bldg., Manhattan Beach, Calif.
WESLER, GEORGE B., ('31), 2831 W. Capitol Dr., Milwaukee, Wis.
WESTER, ROBERT C., ('41), 1140 Ohio St., Lawrence, Kan.
WHITE, GEORGE A., ('33), Field Eng., Brown Const. Co., Las Vegas, N. M.
WIEGAND, ANDREW L., ('35), Tantalum Defense Corp., 1020 2nd St., Chicago, Ill.
WILLIAMS, CHARLES F., ('21), Federal Bldg., Miami, Okla.
WILLIAMS, JOSEPH A., ('25), Box A-165 R. 1, Palacios, Texas.
WILLIAMS, LOUIS D., ('42), Seismic Explorations, Inc., Box 46, Magnolia, Ark.
WILLIAMS, WAKLEY, Address unknown.
WILLIAMSON, GEORGE M., Pres., Williamson Construction Co., 179 Main St., Port Washington, N. Y.
WILLIS, CHARLES F., ('17), Owner, Editor, Publisher of The Mining Journal, 520-528 Title & Trust Bldg., Phoenix, Ariz.
WILMEH, HOWARD, ('47), Andes Copper Mining Co., Potrerillos, Chile.
WILSON, DONALD E., ('26), Civil Eng., U. S. Bur. of Recl., 723 N. 2nd St., Albuquerque, N. M.
WILSON, DONALD N., ('24), Supt., Williams Quimica y Technica, Solid 229, Buenos Aires, Argentina.
WILSON, GEORGE B., ('40), Box 1571, Chesapeake, Ohio.
WINGFIELD, FOREST L., Geologist, Cia Minera de Penoles, S. A., Apt. 251, Monterey, N. L., Mex.
WINNINGHAM, VERNON A., Address unknown.
WITMEYER, WILLIAM J., ('48), 29 E. 9th St., New York City.
WOLCOTT, MANTAGUE L., ('42), Las Vegas, N. M.
WOOTON, THOMAS P., ('28), Montgomery-Ward Co., Oakland, Calif.
WYNES, JAMES B., ('32), 390 Spruce Ave., Niagara Falls, N. Y.
ZABOROWSKI, ANTHONY B., ('32), Civil Eng., Chicago & Northwestern Ry., 500 W. Madison, Chicago, Ill.
ZIMMERLY, EDWARD E., Deceased.
ZIMMERLY, RICHARD M., ('36), Jr. Eng., Div. Off., Humble Oil & Ref. Co., Box 1600, Midland, Texas.
ZINKL, ANDREW J., ('39), Pur. Agt. & Chief Eng., Denn Mining Corp., Iron King Mine, Humbolt, Ariz.
ZWICKY, ROBERT W., ('48), 362 Fisher Ave., Socorro, N. M.



EXAM
TOMORROW!



\$%&!#



SHADES OF
ABE LINCOLN!



"HELLO DOTY, YOU CHARACTER YOU!"



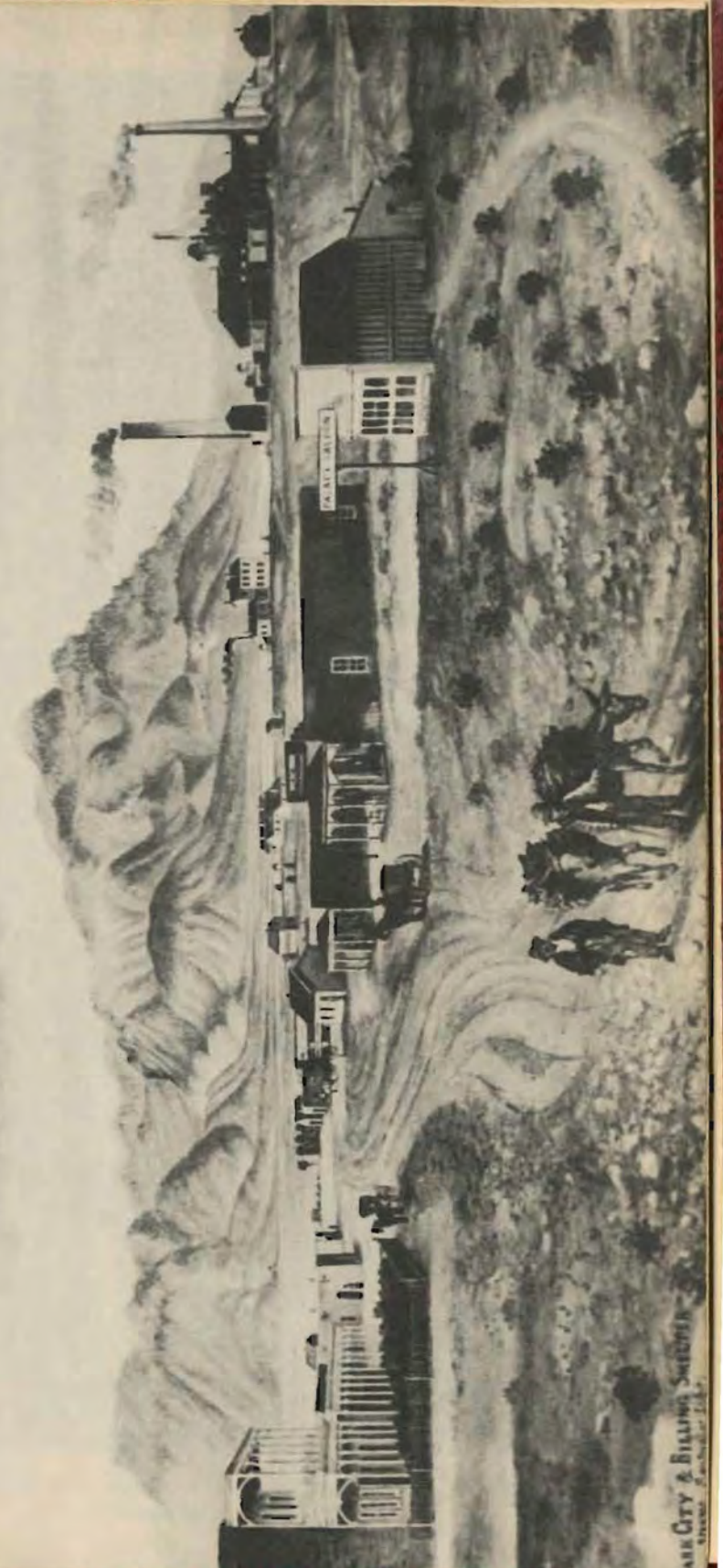
The Old Look



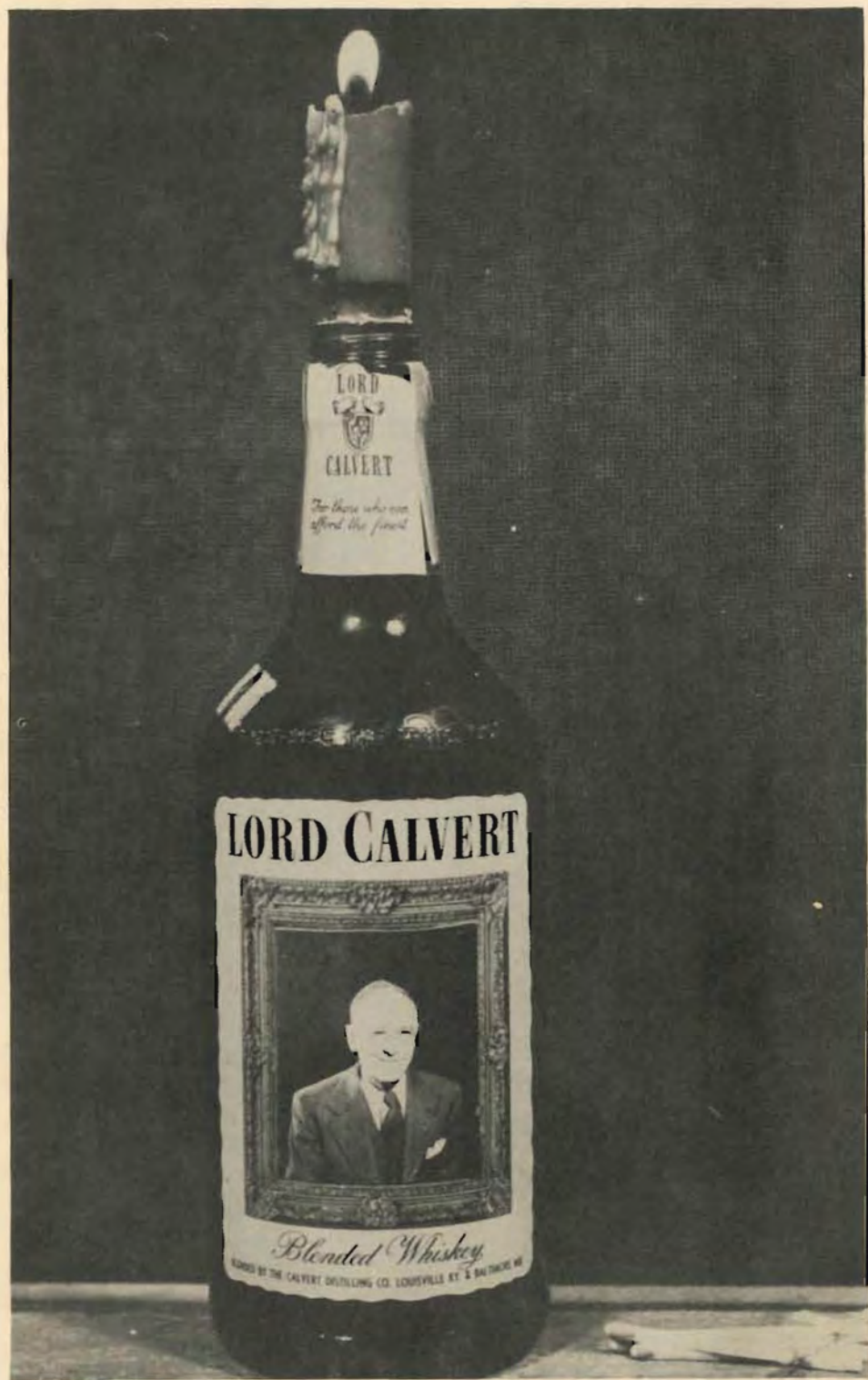
The New Look



The End



ARK CITY & BILLING SWEDEN
1914



*"It is better to light a candle than to curse
the darkness."*